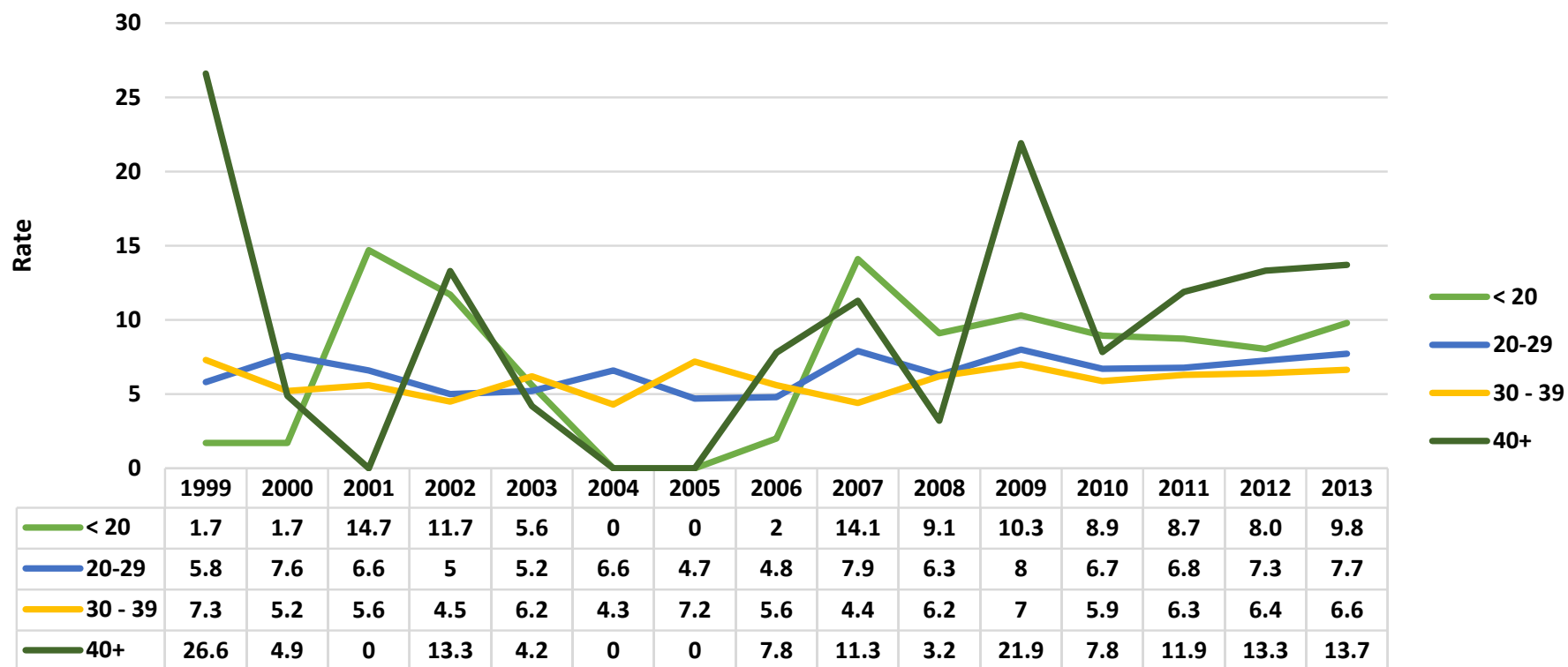
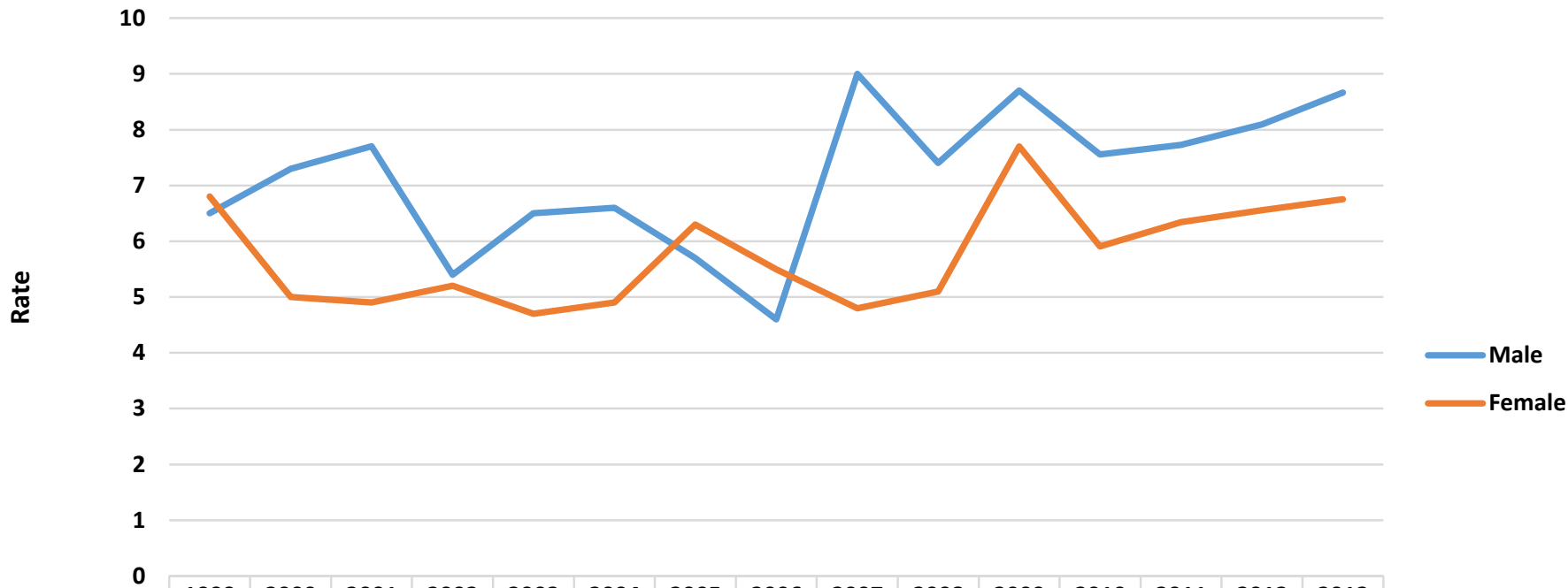


Macomb County: Infant Death Rates by Age of Mother



Source: Vital Statistics, Michigan Department of Health and Human Services Updated: October 2015

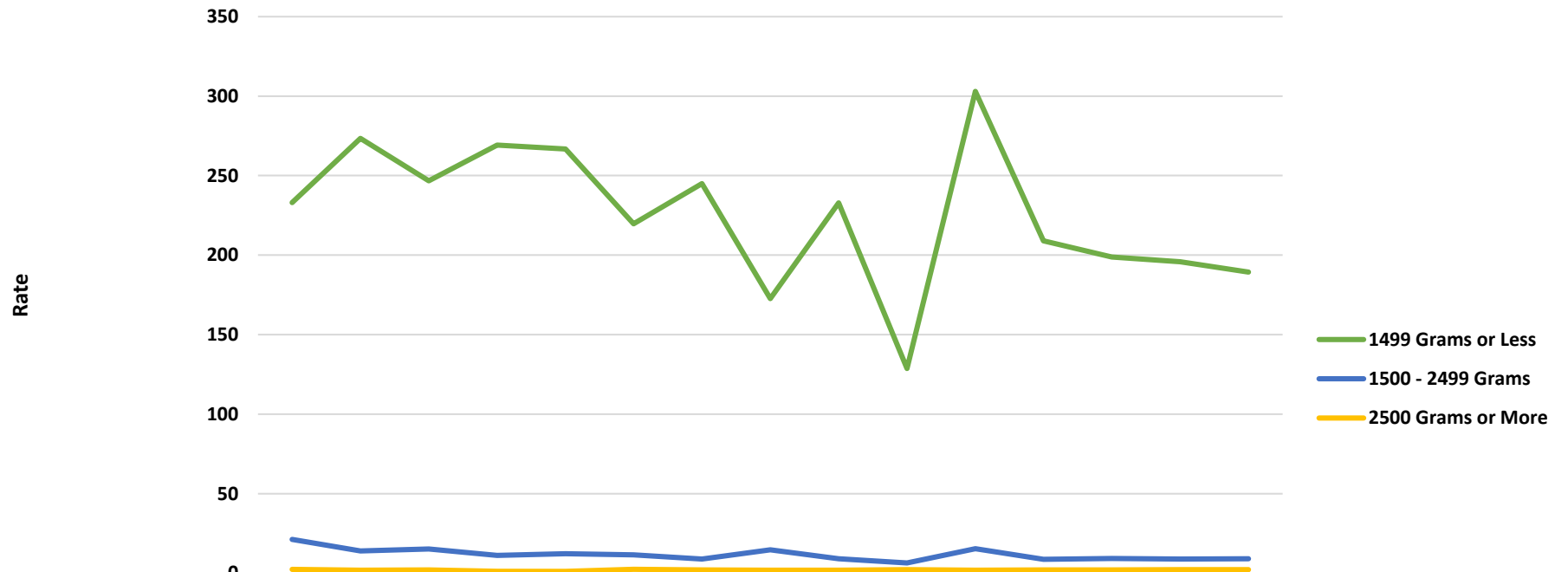
Macomb County: Infant Death Rates by Sex of Infant



	1999	2000	2001	2002	2003	2004	2005	2006	2007	2008	2009	2010	2011	2012	2013
Male	6.5	7.3	7.7	5.4	6.5	6.6	5.7	4.6	9	7.4	8.7	7.6	7.7	8.1	8.7
Female	6.8	5	4.9	5.2	4.7	4.9	6.3	5.5	4.8	5.1	7.7	5.9	6.3	6.6	6.8

Source: Vital Statistics, Michigan Department of Health and Human Services Updated: October 2015

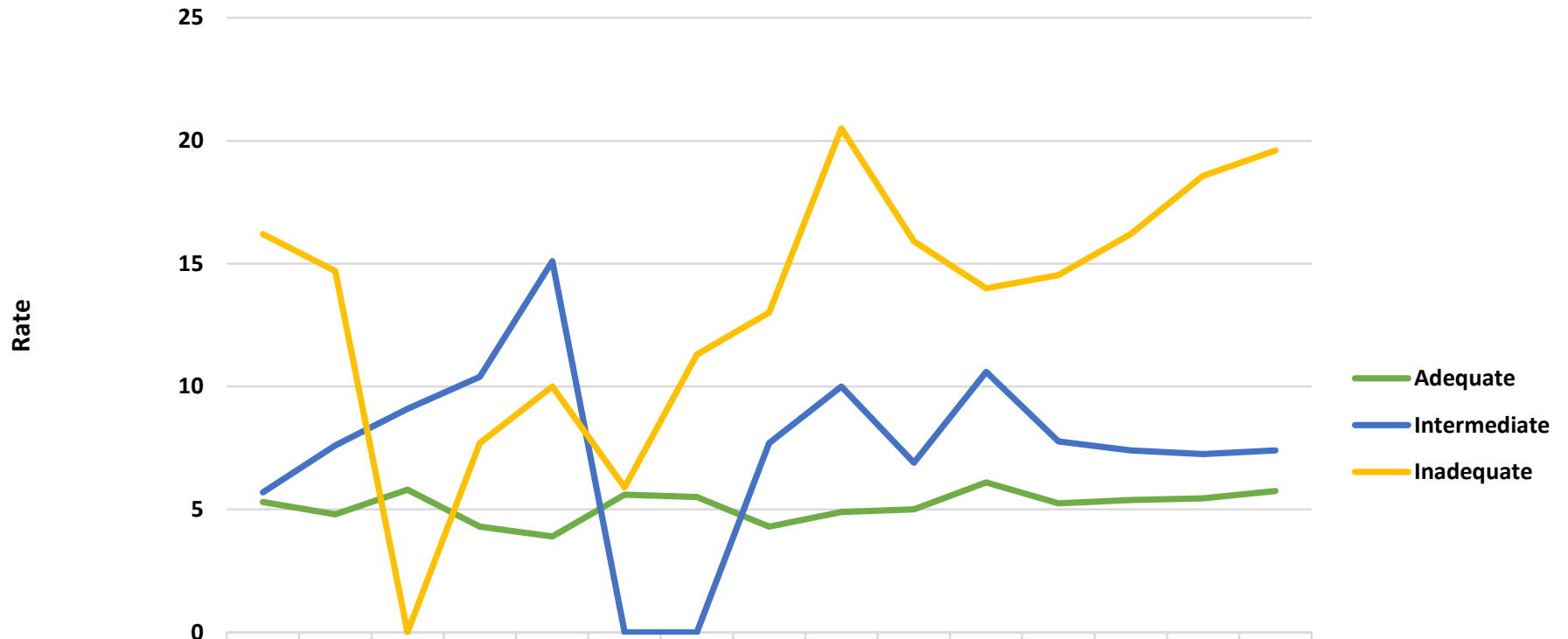
Macomb County: Infant Death Rates by Birthweight



	1999	2000	2001	2002	2003	2004	2005	2006	2007	2008	2009	2010	2011	2012	2013
1499 Grams or Less	233.1	273.4	246.7	269.2	266.7	219.7	245	172.7	232.8	128.7	303	209.1	198.8	195.8	189.3
1500 - 2499 Grams	21.2	14	15.2	11.1	12.2	11.5	8.9	14.7	9.1	6.4	15.4	8.7	9.2	8.9	9.1
2500 Grams or More	2.3	1.9	2	1.2	1.1	2.4	2	1.8	1.9	2.2	1.9	1.9	2.1	2.1	2.3

Source: Vital Statistics, Michigan Department of Health and Human Services Updated: October 2015

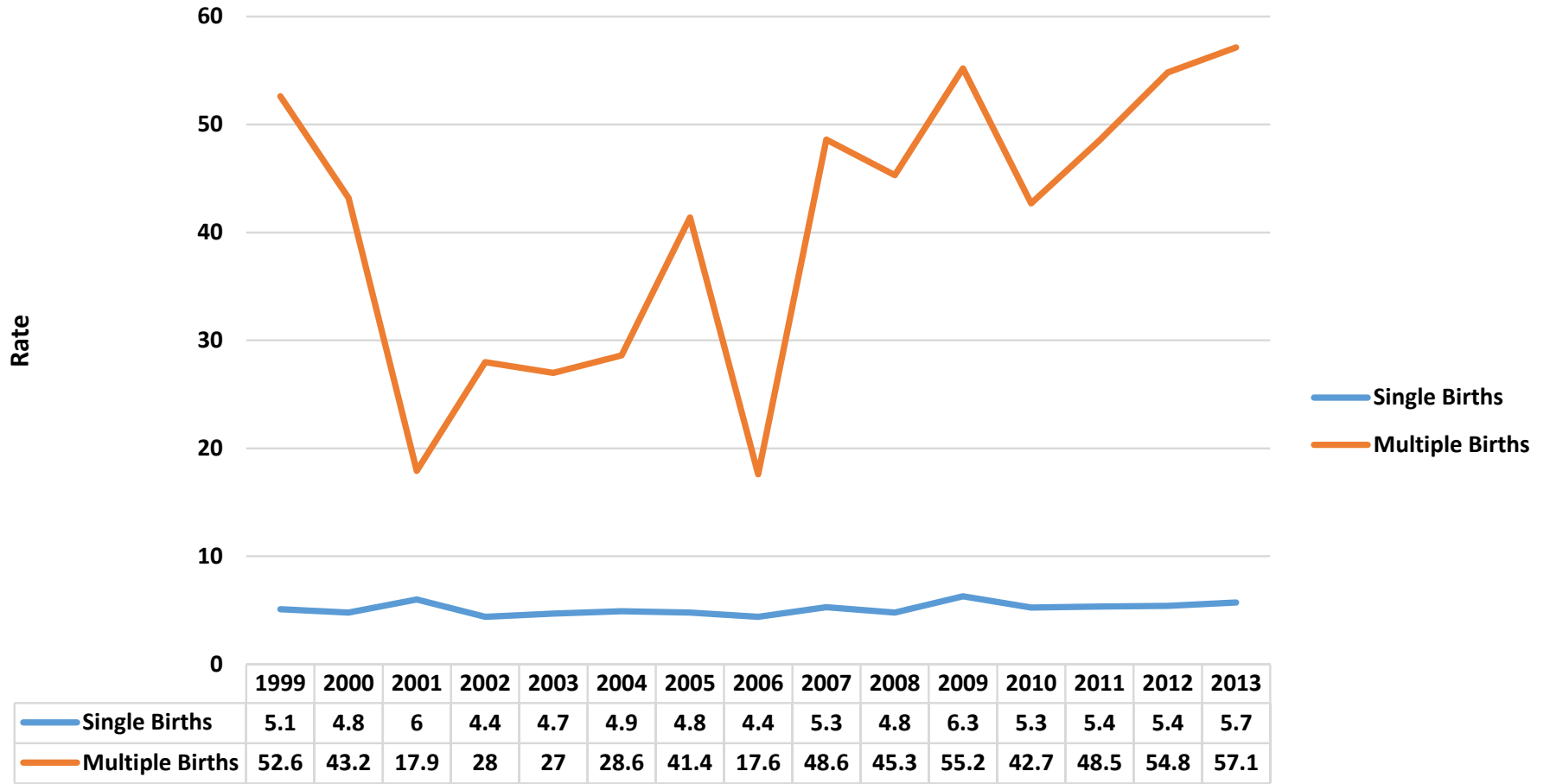
Macomb County: Infant Death Rates by Level of Prenatal Care



	1999	2000	2001	2002	2003	2004	2005	2006	2007	2008	2009	2010	2011	2012	2013
Adequate	5.3	4.8	5.8	4.3	3.9	5.6	5.5	4.3	4.9	5	6.1	5.2	5.4	5.4	5.7
Intermediate	5.7	7.6	9.1	10.4	15.1	0	0	7.7	10	6.9	10.6	7.8	7.4	7.3	7.4
Inadequate	16.2	14.7	0	7.7	10	5.9	11.3	13	20.5	15.9	14	14.5	16.2	18.6	19.6

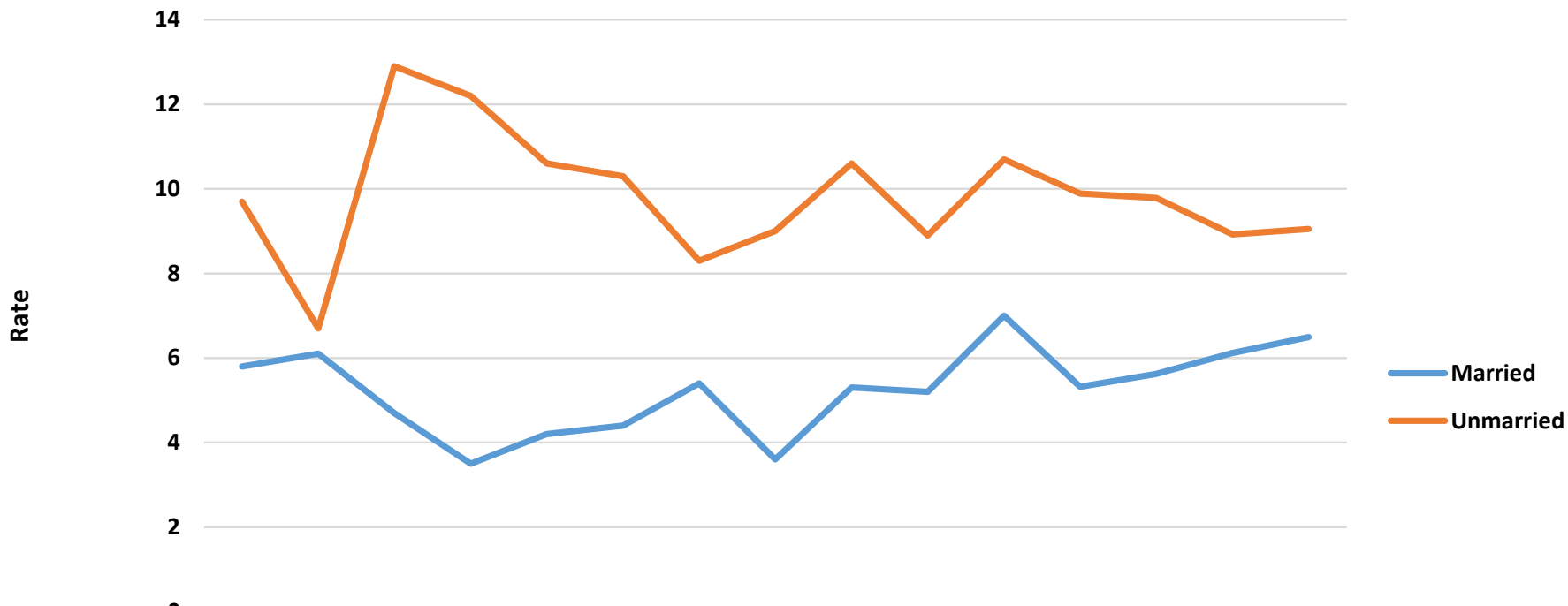
Source: Vital Statistics, Michigan Department of Health and Human Services Updated: October 2015

Macomb County: Infant Death Rates by Plurality



Source: Vital Statistics, Michigan Department of Health and Human Services Updated: October 2015

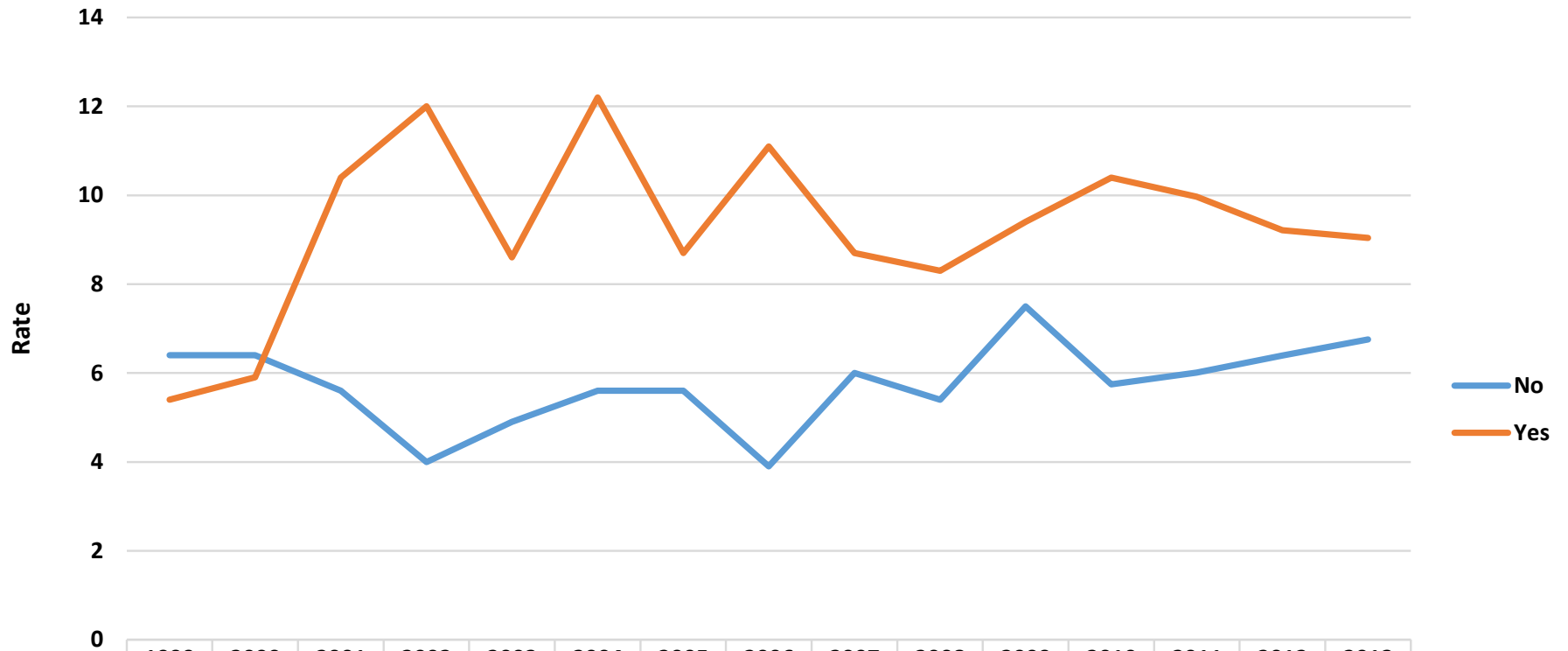
Macomb County: Infant Death Rates by Marital Status



	1999	2000	2001	2002	2003	2004	2005	2006	2007	2008	2009	2010	2011	2012	2013
— Married	5.8	6.1	4.7	3.5	4.2	4.4	5.4	3.6	5.3	5.2	7	5.3	5.6	6.1	6.5
— Unmarried	9.7	6.7	12.9	12.2	10.6	10.3	8.3	9	10.6	8.9	10.7	9.9	9.8	8.9	9.0

Source: Vital Statistics, Michigan Department of Health and Human Services Updated: October 2015

Macomb County: Infant Death Rates by Smoking During Pregnancy



	1999	2000	2001	2002	2003	2004	2005	2006	2007	2008	2009	2010	2011	2012	2013
No	6.4	6.4	5.6	4	4.9	5.6	5.6	3.9	6	5.4	7.5	5.7	6.0	6.4	6.8
Yes	5.4	5.9	10.4	12	8.6	12.2	8.7	11.1	8.7	8.3	9.4	10.4	10.0	9.2	9.0

Source: Vital Statistics, Michigan Department of Health and Human Services **Updated:** October 2015