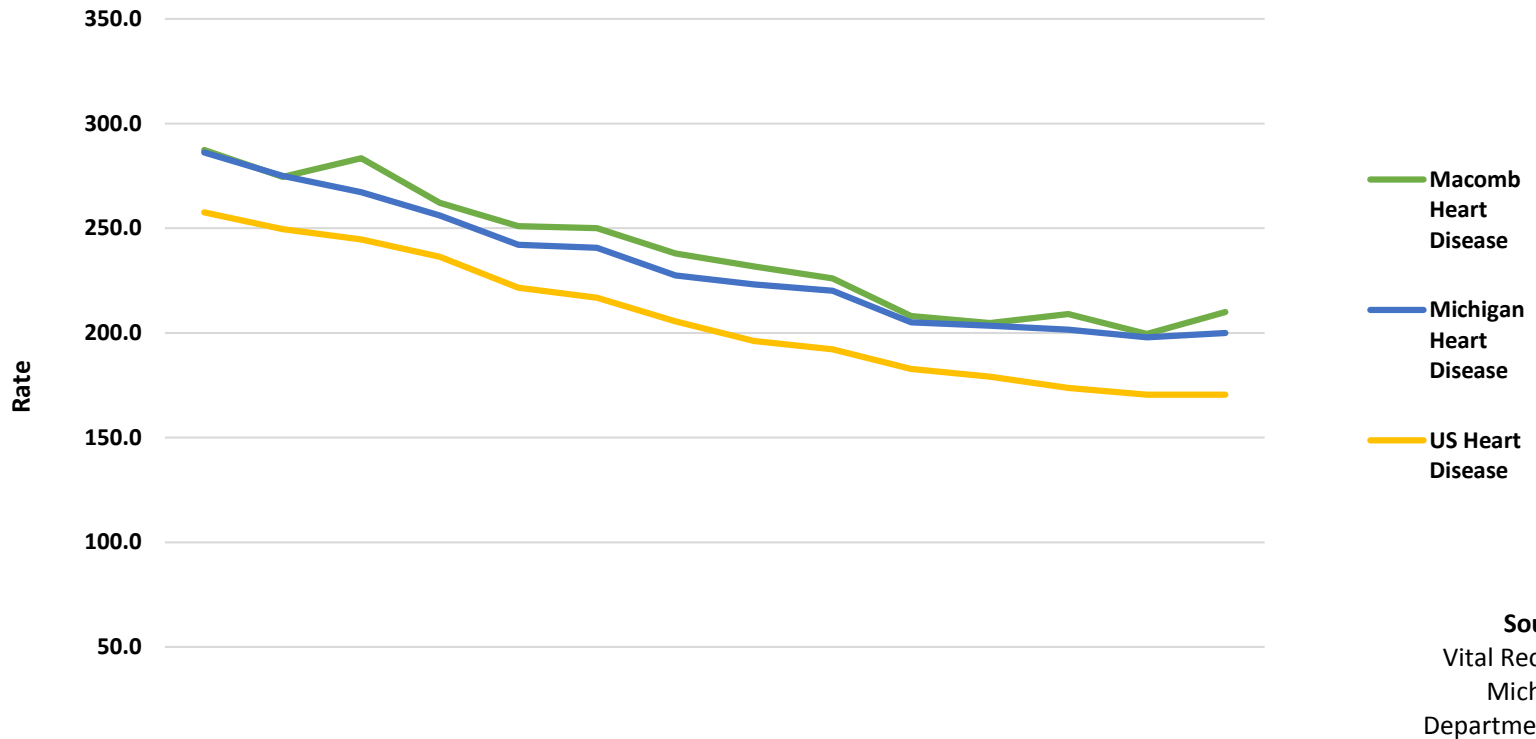


## Macomb County: Leading Causes of Death as Compared to Michigan and the United States - Heart Disease, 2000-2013



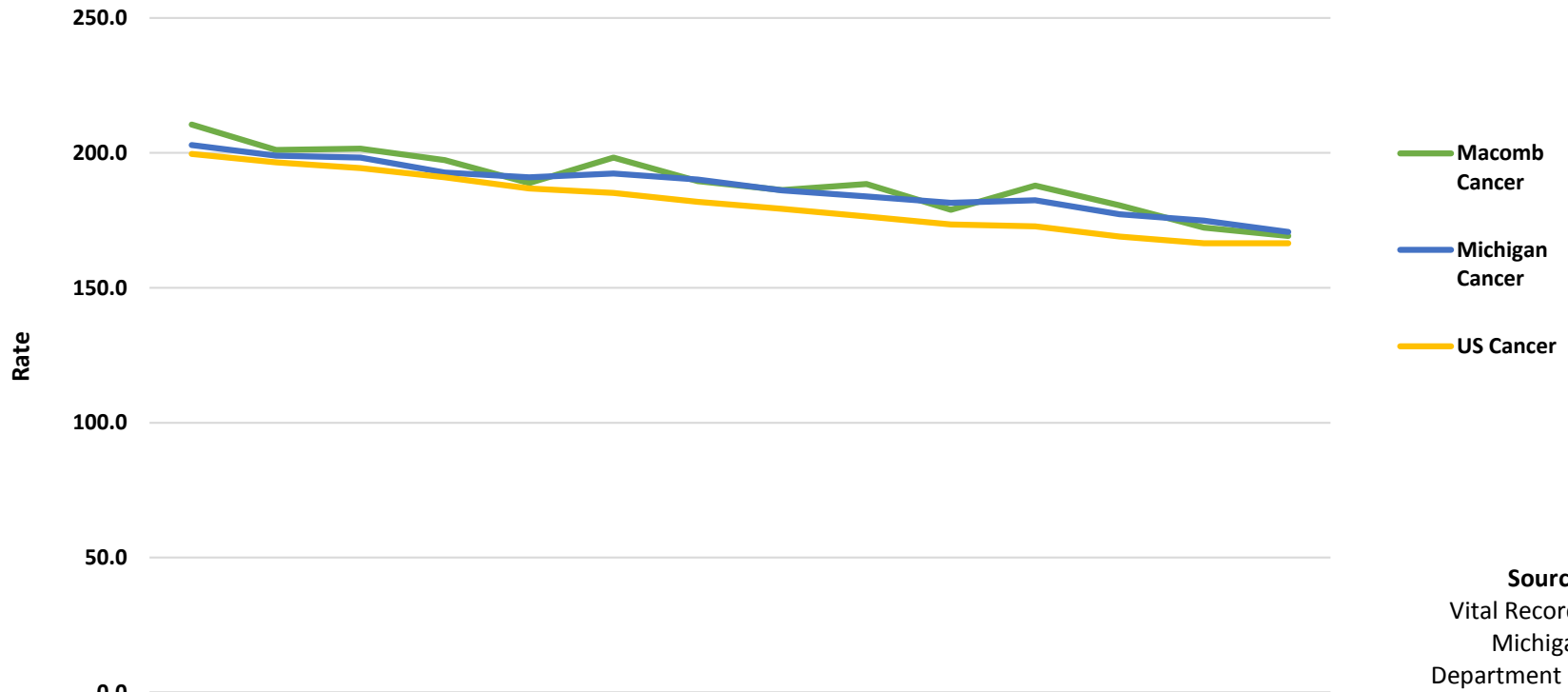
— Macomb Heart Disease  
— Michigan Heart Disease  
— US Heart Disease

**Source:**  
 Vital Records  
 Michigan  
 Department of  
 Health and Human  
 Services

**Updated:**  
 October 2015

	2000	2001	2002	2003	2004	2005	2006	2007	2008	2009	2010	2011	2012	2013
<span style="color: green;">—</span> Macomb Heart Disease	287.4	274.6	283.5	262.2	251.0	250.0	238.0	231.7	226.0	208.0	204.7	209.0	199.5	209.9
<span style="color: blue;">—</span> Michigan Heart Disease	286.2	275.0	267.3	256.1	242.1	240.6	227.4	223.1	220.2	205.0	203.5	201.6	197.9	200.0
<span style="color: yellow;">—</span> US Heart Disease	257.6	249.5	244.6	236.3	221.6	216.8	205.5	196.1	192.1	182.8	179.1	173.7	170.5	170.5

### Macomb County: Leading Causes of Death as Compared to Michigan and the United States - Cancer, 2000-2013



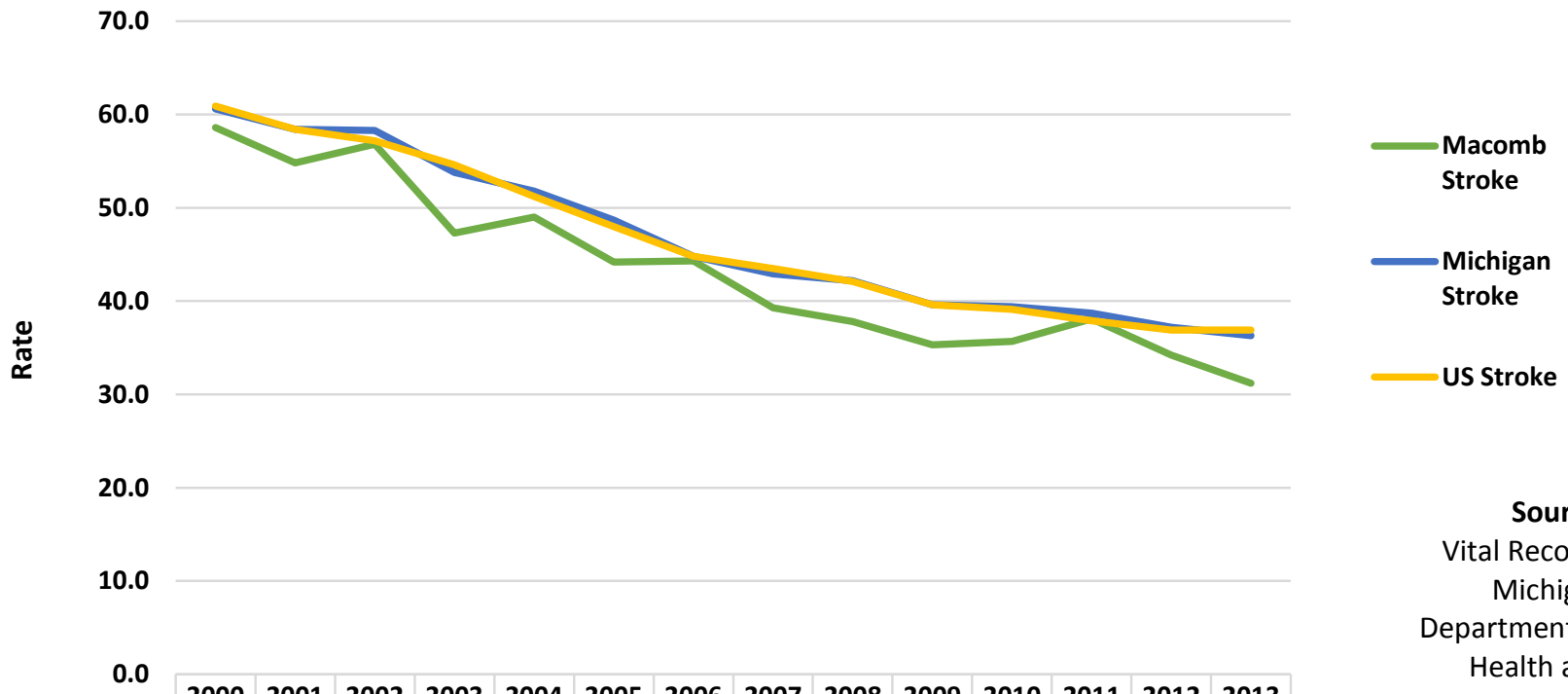
— Macomb Cancer  
— Michigan Cancer  
— US Cancer

**Source:**  
 Vital Records  
 Michigan  
 Department of  
 Health and Human  
 Services

**Updated:**  
 October 2015

	2000	2001	2002	2003	2004	2005	2006	2007	2008	2009	2010	2011	2012	2013
<span style="color: green;">—</span> Macomb Cancer	210.5	201.1	201.6	197.3	188.8	198.2	189.5	186.2	188.4	178.9	187.9	180.5	172.3	169.2
<span style="color: blue;">—</span> Michigan Cancer	202.9	199.0	198.3	192.7	190.9	192.4	190.1	186.1	183.9	181.5	182.4	177.2	174.9	170.7
<span style="color: yellow;">—</span> US Cancer	199.6	196.5	194.3	190.9	186.8	185.1	181.8	179.3	176.4	173.5	172.8	169.0	166.5	166.5

## Macomb County: Leading Causes of Death as Compared to Michigan and the United States - Stroke, 2000-2013

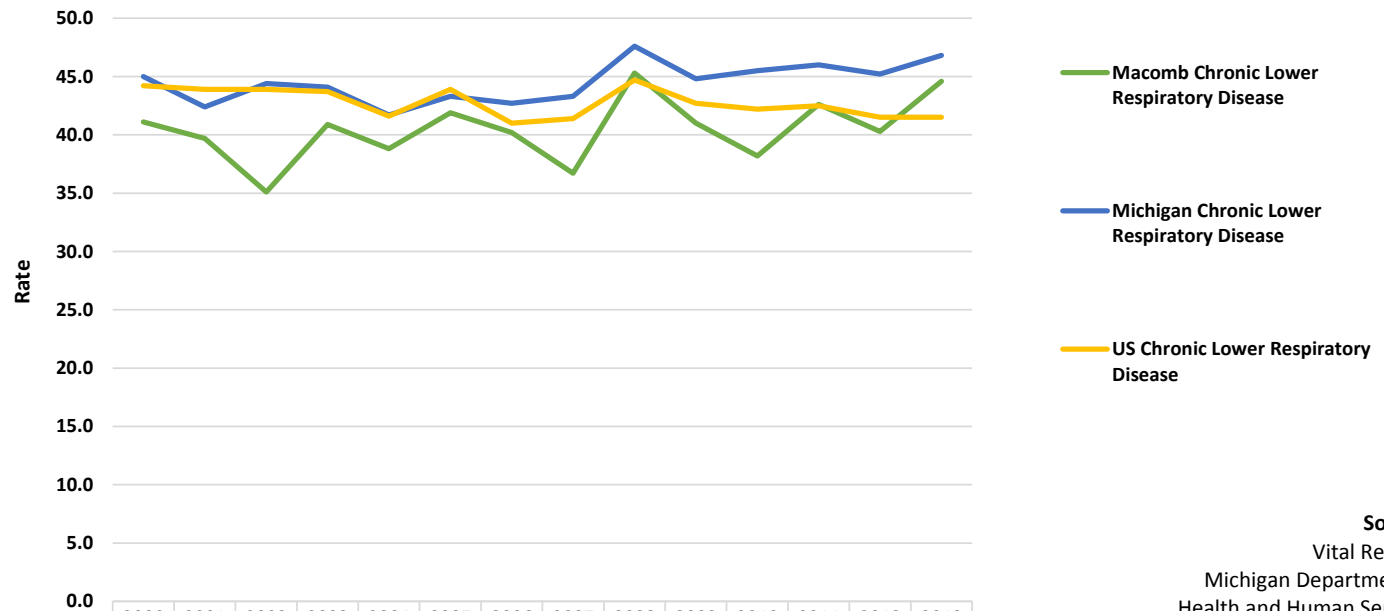


**Source:**  
Vital Records  
Michigan  
Department of  
Health and  
Human Services

**Updated:**  
October 2015

	2000	2001	2002	2003	2004	2005	2006	2007	2008	2009	2010	2011	2012	2013
Macomb Stroke	58.6	54.8	56.8	47.3	49.0	44.2	44.3	39.3	37.8	35.3	35.7	38.1	34.2	31.2
Michigan Stroke	60.6	58.4	58.3	53.8	51.8	48.7	44.8	42.9	42.2	39.6	39.4	38.7	37.2	36.3
US Stroke	60.9	58.4	57.2	54.6	51.2	48.0	44.8	43.5	42.1	39.6	39.1	37.9	36.9	36.9

### Macomb County: Leading Causes of Death as Compared to Michigan and the United States - Chronic Lower Respiratory Disease (CLRD), 2000-2013

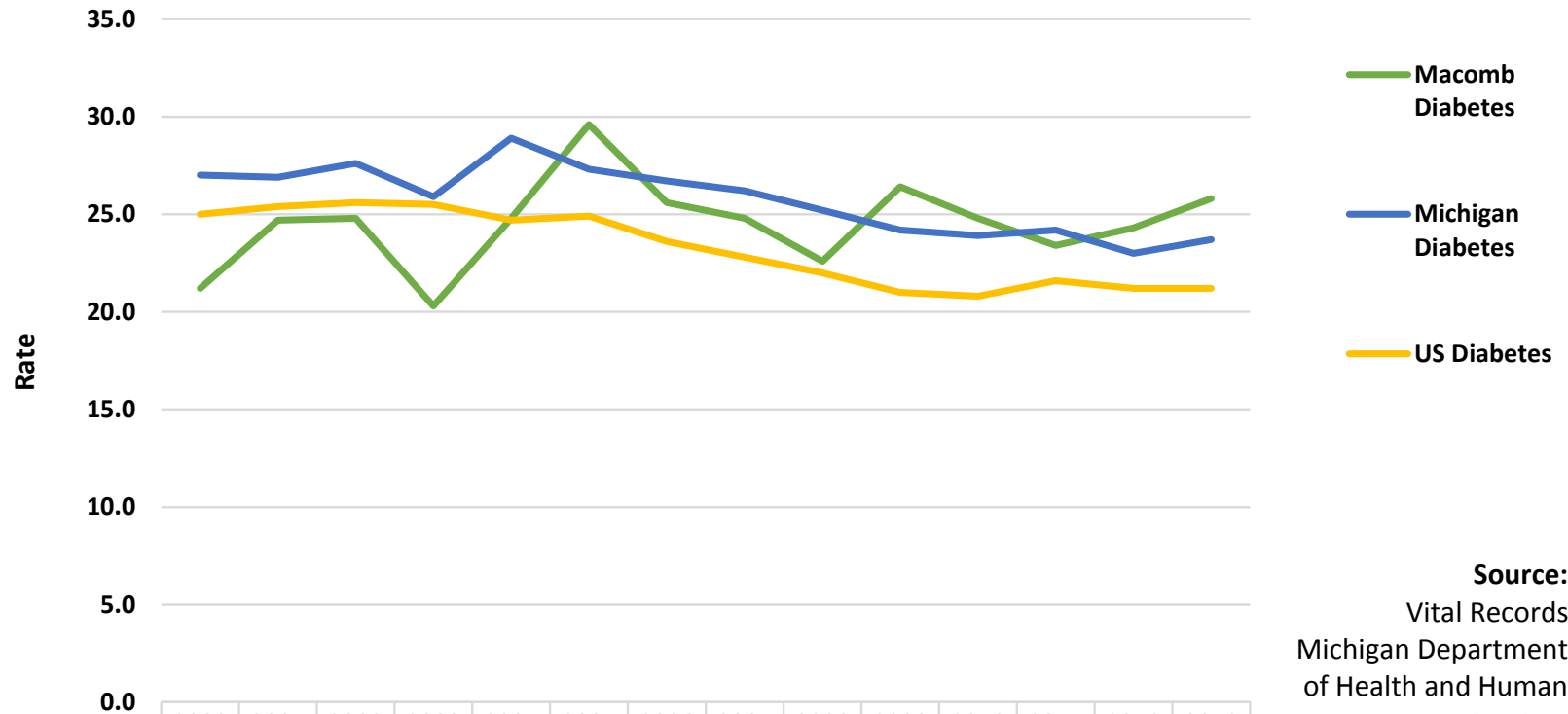


	2000	2001	2002	2003	2004	2005	2006	2007	2008	2009	2010	2011	2012	2013
Macomb Chronic Lower Respiratory Disease	41.1	39.7	35.1	40.9	38.8	41.9	40.2	36.7	45.3	41.0	38.2	42.6	40.3	44.6
Michigan Chronic Lower Respiratory Disease	45.0	42.4	44.4	44.1	41.7	43.3	42.7	43.3	47.6	44.8	45.5	46.0	45.2	46.8
US Chronic Lower Respiratory Disease	44.2	43.9	43.9	43.7	41.6	43.9	41.0	41.4	44.7	42.7	42.2	42.5	41.5	41.5

**Source:**  
Vital Records  
Michigan Department of  
Health and Human Services

**Updated:**  
October 2015

## Macomb County: Leading Causes of Death as Compared to Michigan and the United States - Diabetes, 2000-2013

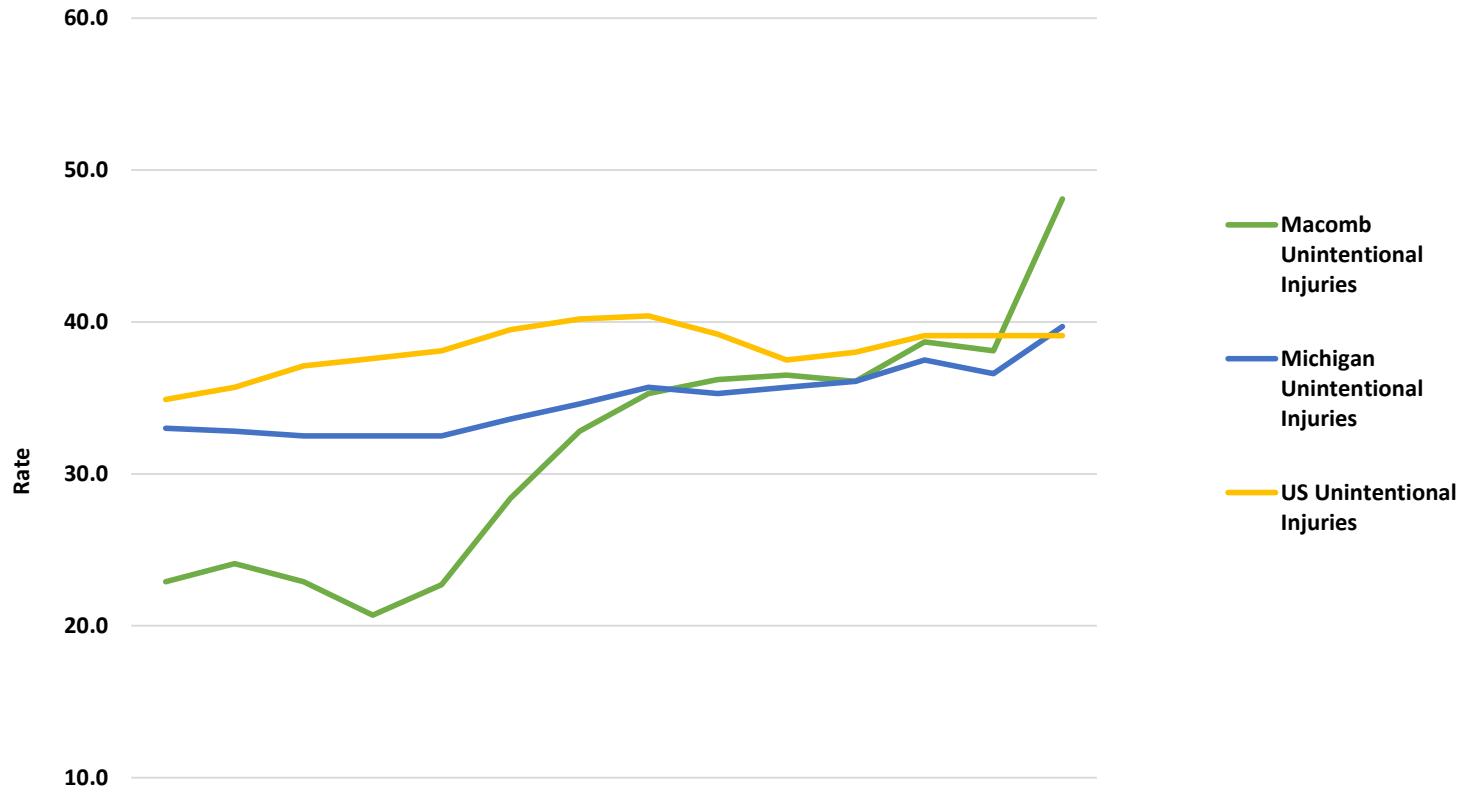


	2000	2001	2002	2003	2004	2005	2006	2007	2008	2009	2010	2011	2012	2013
Macomb Diabetes	21.2	24.7	24.8	20.3	24.8	29.6	25.6	24.8	22.6	26.4	24.8	23.4	24.3	25.8
Michigan Diabetes	27.0	26.9	27.6	25.9	28.9	27.3	26.7	26.2	25.2	24.2	23.9	24.2	23.0	23.7
US Diabetes	25.0	25.4	25.6	25.5	24.7	24.9	23.6	22.8	22.0	21.0	20.8	21.6	21.2	21.2

**Source:**  
Vital Records  
Michigan Department  
of Health and Human  
Services

**Updated:**  
October 2015

**Macomb County: Leading Causes of Death as Compared to Michigan and the United States - Unintentional Injuries, 2000-2013**

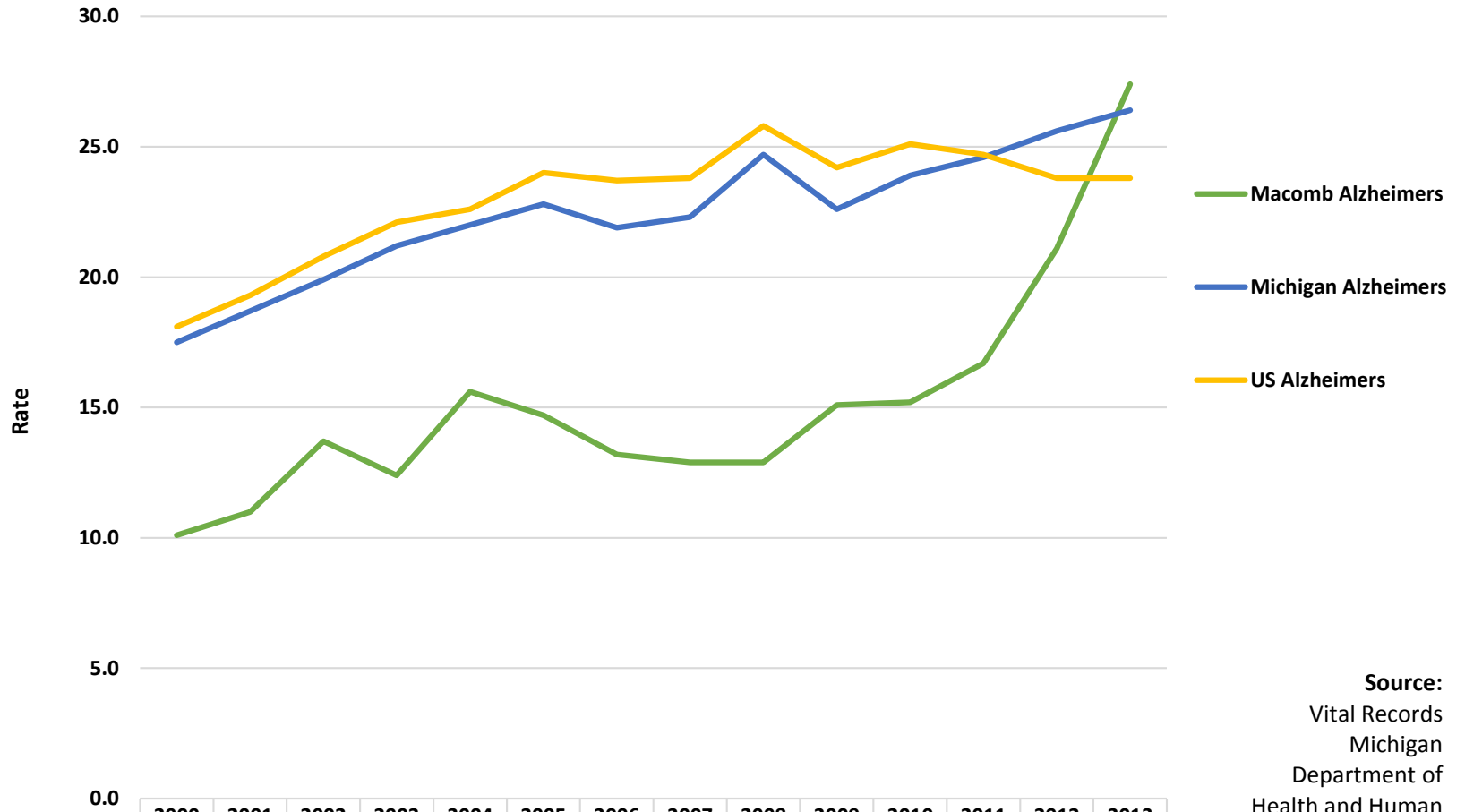


	2000	2001	2002	2003	2004	2005	2006	2007	2008	2009	2010	2011	2012	2013
Macomb Unintentional Injuries	22.9	24.1	22.9	20.7	22.7	28.4	32.8	35.3	36.2	36.5	36.1	38.7	38.1	48.1
Michigan Unintentional Injuries	33.0	32.8	32.5	32.5	32.5	33.6	34.6	35.7	35.3	35.7	36.1	37.5	36.6	39.7
US Unintentional Injuries	34.9	35.7	37.1	37.6	38.1	39.5	40.2	40.4	39.2	37.5	38.0	39.1	39.1	39.1

**Source:**  
Vital Records  
Michigan  
Department of  
Health and Human  
Services

**Updated:**  
October 2015

## Macomb County: Leading Causes of Death as Compared to Michigan and the United States - Alzheimers, 2000-2013

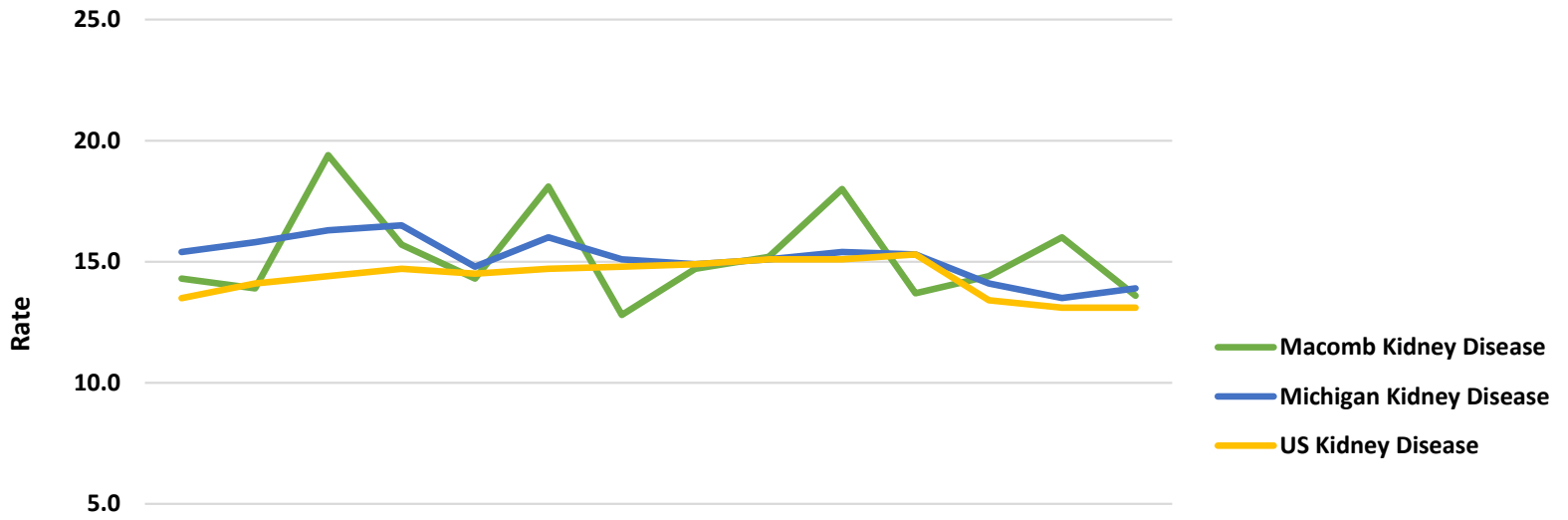


	2000	2001	2002	2003	2004	2005	2006	2007	2008	2009	2010	2011	2012	2013
Macomb Alzheimers	10.1	11.0	13.7	12.4	15.6	14.7	13.2	12.9	12.9	15.1	15.2	16.7	21.1	27.4
Michigan Alzheimers	17.5	18.7	19.9	21.2	22.0	22.8	21.9	22.3	24.7	22.6	23.9	24.6	25.6	26.4
US Alzheimers	18.1	19.3	20.8	22.1	22.6	24.0	23.7	23.8	25.8	24.2	25.1	24.7	23.8	23.8

**Source:**  
 Vital Records  
 Michigan  
 Department of  
 Health and Human  
 Services

**Updated:**  
 October 2015

## Macomb County: Leading Causes of Death as Compared to Michigan and the United States - Kidney Disease, 2000-2013



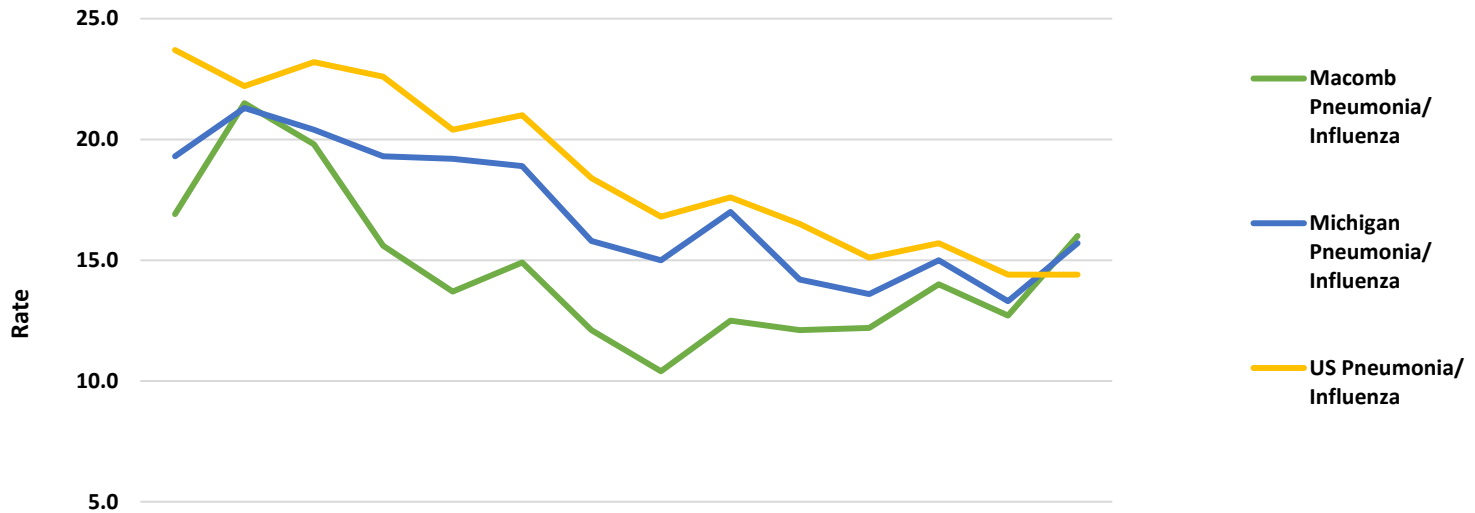
	2000	2001	2002	2003	2004	2005	2006	2007	2008	2009	2010	2011	2012	2013
Macomb Kidney Disease	14.3	13.9	19.4	15.7	14.3	18.1	12.8	14.7	15.2	18.0	13.7	14.4	16.0	13.6
Michigan Kidney Disease	15.4	15.8	16.3	16.5	14.8	16.0	15.1	14.9	15.1	15.4	15.3	14.1	13.5	13.9
US Kidney Disease	13.5	14.1	14.4	14.7	14.5	14.7	14.8	14.9	15.1	15.1	15.3	13.4	13.1	13.1

**Source:**  
Vital Records  
Michigan Department of  
Health and Human Services

**Updated:**  
October 2015



### Macomb County: Leading Causes of Death as Compared to Michigan and the United States - Pneumonia/Influenza, 2000-2013

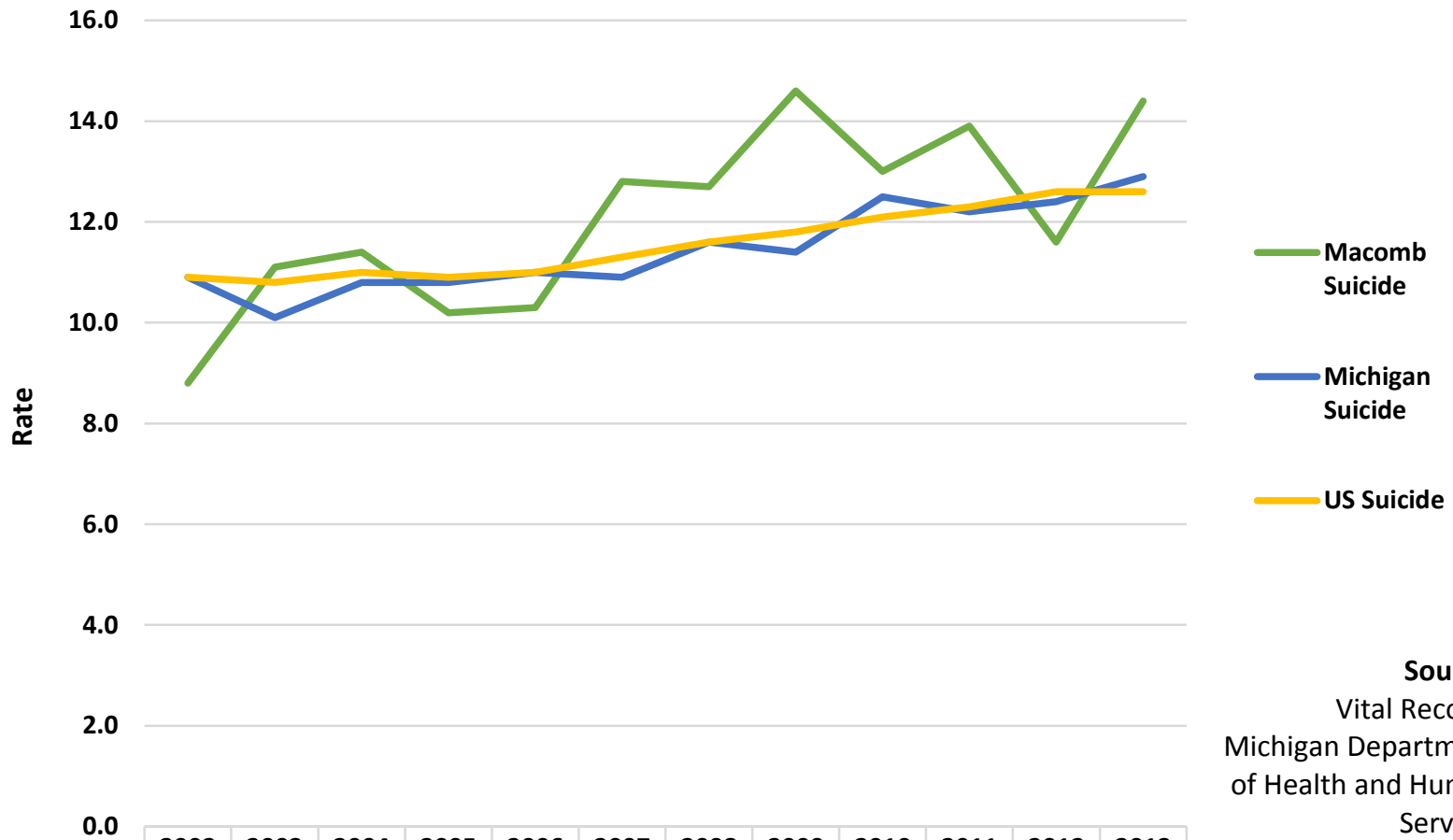


	2000	2001	2002	2003	2004	2005	2006	2007	2008	2009	2010	2011	2012	2013
Macomb Pneumonia/ Influenza	16.9	21.5	19.8	15.6	13.7	14.9	12.1	10.4	12.5	12.1	12.2	14.0	12.7	16.0
Michigan Pneumonia/ Influenza	19.3	21.3	20.4	19.3	19.2	18.9	15.8	15.0	17.0	14.2	13.6	15.0	13.3	15.7
US Pneumonia/ Influenza	23.7	22.2	23.2	22.6	20.4	21.0	18.4	16.8	17.6	16.5	15.1	15.7	14.4	14.4

**Source:**  
Vital Records  
Michigan Department of  
Health and Human Services

**Updated:**  
October 2015

## Macomb County: Leading Causes of Death as Compared to Michigan and the United States - Suicide, 2000-2013



**Source:**  
Vital Records  
Michigan Department  
of Health and Human  
Services

**Updated:**  
October 2015

Macomb Suicide	8.8	11.1	11.4	10.2	10.3	12.8	12.7	14.6	13.0	13.9	11.6	14.4
Michigan Suicide	10.9	10.1	10.8	10.8	11.0	10.9	11.6	11.4	12.5	12.2	12.4	12.9
US Suicide	10.9	10.8	11.0	10.9	11.0	11.3	11.6	11.8	12.1	12.3	12.6	12.6