



## **Students and Staff With Symptoms of COVID-19 or Who Have Been Exposed to COVID-19**

### **Students and Staff with Symptoms of COVID-19 (See Appendix A)**

- Symptoms of COVID-19 include the following. These symptoms should be new or different/worse than baseline for any existing chronic illness.

Any one of the following:

- Cough
- Shortness of breath
- Difficulty breathing
- New loss of smell
- New loss of taste

OR

Two or more of the following:

- Subjective fever (felt feverish) or measured temperature of 100.4 degrees Fahrenheit or higher
  - Chills or rigors (shaking or exaggerated shivering)
  - Muscle aches without another explanation
  - Headache
  - Sore throat
  - Nausea or vomiting
  - Diarrhea
  - Fatigue
  - Congestion or runny nose
- A student or staff person who exhibits COVID-19 symptoms as defined above should not go to school or any school activity. If at school or any school activity, they should be sent home. These individuals should be evaluated by a healthcare provider and tested for COVID-19 with a diagnostic test.

- If at school or any school activity, the student/staff person should wear a face covering and wait in an isolation area away from other staff and students until they leave the school building.

### **Confirmed and Probable Cases of COVID-19**

- A person who has tested positive for COVID-19 is a confirmed case of COVID-19 if the positive test was a polymerase chain reaction (PCR) test and a probable case of COVID-19 if the positive test was an antigen test. A person with symptoms (previously described) and who has had close contact with a person who has tested positive for COVID-19 (PCR test or antigen test) is considered a probable case of COVID-19.
- School administration must report any student or staff person with confirmed or probable COVID-19 to the Macomb County Health Department (see Return to School Toolkit, Appendix C, COVID-19 Report Form).
- School administration must notify school staff and student families on the school's website when a student or staff person with confirmed or probable COVID-19 has been identified in a school maintaining the confidentiality of the student or staff person as required by state and federal laws. School administration may also choose to provide written notification to school staff and student families.

### **Returning to School or Work**

- Students and staff with symptoms who test positive for COVID-19 or who are a probable case of COVID-19 may return to school/work if:
  - At least 10 days have passed since symptom onset and
  - At least 24 hours have passed since resolution of fever without the use of fever-reducing medications and
  - Other symptoms have improved
- Students and staff who never had symptoms but who test positive for COVID-19 may return to school/work if at least 10 days have passed since the date of their first positive COVID-19 test (provided no symptoms appeared during the 10-day period).
- Day zero (0) is the day of symptom onset or the day the positive test specimen was collected (if there were no symptoms). The isolation period ends at midnight on the last day of the isolation period. The last day of isolation is usually day 10 but may be a later day if symptoms have not improved or fever has not resolved for at least 24 hours without the use of fever-reducing medication.

- Students and staff with symptoms (previously described) who test negative for COVID-19 (with a PCR test) and who have had no close contact with a person who has tested positive for COVID-19 may return to school/work 24 hours after resolution of fever and improvement of symptoms.
- Students and staff with symptoms (previously described) who were not tested for COVID-19 and who have had no close contact with a person who has tested positive for COVID-19 may return to school/work 24 hours after resolution of fever and improvement of symptoms if they present a note from a healthcare provider that provides an alternative explanation for the symptoms. If a healthcare provider note is not available, the student or staff person may return to school/work if:
  - At least 10 days have passed since symptom onset and
  - At least 24 hours have passed since resolution of fever without the use of fever-reducing medications and
  - Other symptoms have improved

### **Students and Staff Exposed to COVID-19**

- The Macomb County Health Department will work with the school to identify close contacts of persons with confirmed or probable COVID-19 (see Return to School Toolkit, Appendix D, Contact Tracing Form).
- A close contact is someone who has been within 6 feet of a person with confirmed or probable COVID-19 for a cumulative total of 15 minutes or more over a 24-hour period starting from 2 days before illness onset (or, for asymptomatic persons, 2 days prior to test specimen collection). The determination of close contact should be made irrespective of the use of face coverings.

### **Students and Staff Exposed to COVID-19 in the Community or at Home**

- Students and staff exposed to COVID-19 in the community or at home must follow standard quarantine procedures and remain quarantined at home for 10 days after last contact with a person with confirmed or probable COVID-19. Day zero (0) is the day of last contact and the quarantine period ends at midnight on day 10.
- The quarantine period for household contacts is 10 days after the date the person with confirmed or probable COVID-19 completes the isolation period if ongoing close household contact cannot be avoided. If ongoing close household contact can be avoided, the quarantine period is 10 days after the date close household contact ended.

- The quarantine period may be reduced to 7 days if the contact receives a negative viral (PCR or antigen) test performed at least 5 days after exposure.
- Quarantine is not necessary for the following persons:
  - Students or staff who have tested positive for COVID-19 in the past 3 months.
  - Students and staff who have been fully vaccinated against COVID-19 defined as 2 weeks or more following receipt of the second dose using a 2-dose series or receipt of one dose using a single-dose vaccine. It is recommended that fully vaccinated students or staff get tested 3-5 days after exposure (even if they do not have symptoms) and wear a mask indoors for 14 days following exposure or until they receive a negative test result.
  - Students or staff persons who are contacts of a contact.
- Students or staff who are close contacts and who test positive for COVID-19 must be reported to the Macomb County Health Department and managed as previously outlined.

### **Students and Staff Exposed to COVID-19 in a School Setting**

Students and staff exposed to COVID-19 in a school setting must be managed using the modified quarantine procedure outlined in Appendix B.

### Macomb County Health Department (MCHD) Students and Staff with Symptoms of COVID-19

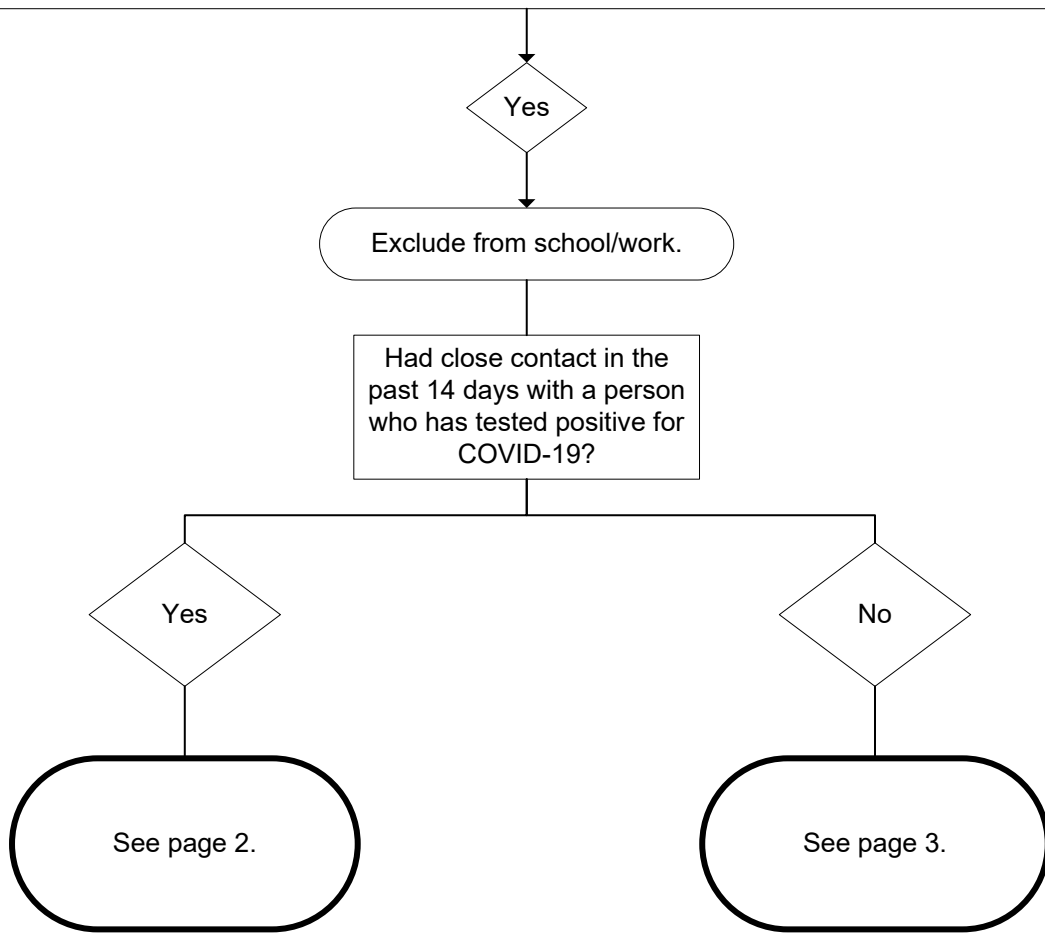
Student/Staff person has any of the following symptoms (new/different/worse than baseline for any chronic illness):

**One** of the following:

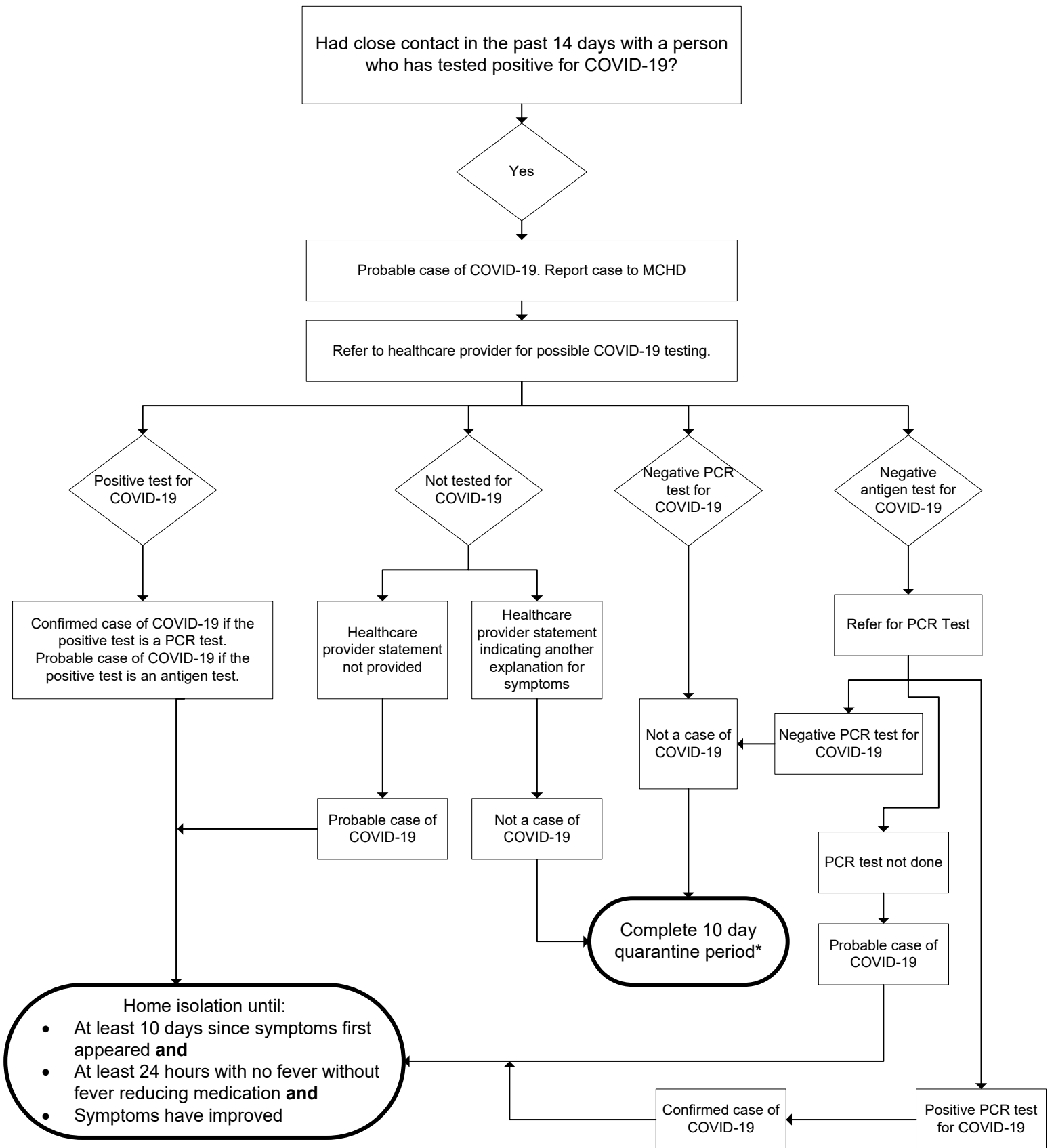
- Cough
- Shortness of breath
- Difficulty breathing
- New loss of smell
- New loss of taste

OR **Two** of the following:

- Subjective fever (felt feverish) or measured temperature 100.4 degrees Fahrenheit or higher
- Chills
- Rigors (shaking or exaggerated shivering)
- Muscle aches
- Headache
- Sore throat
- Nausea or vomiting
- Diarrhea
- Fatigue
- Congestion or runny nose

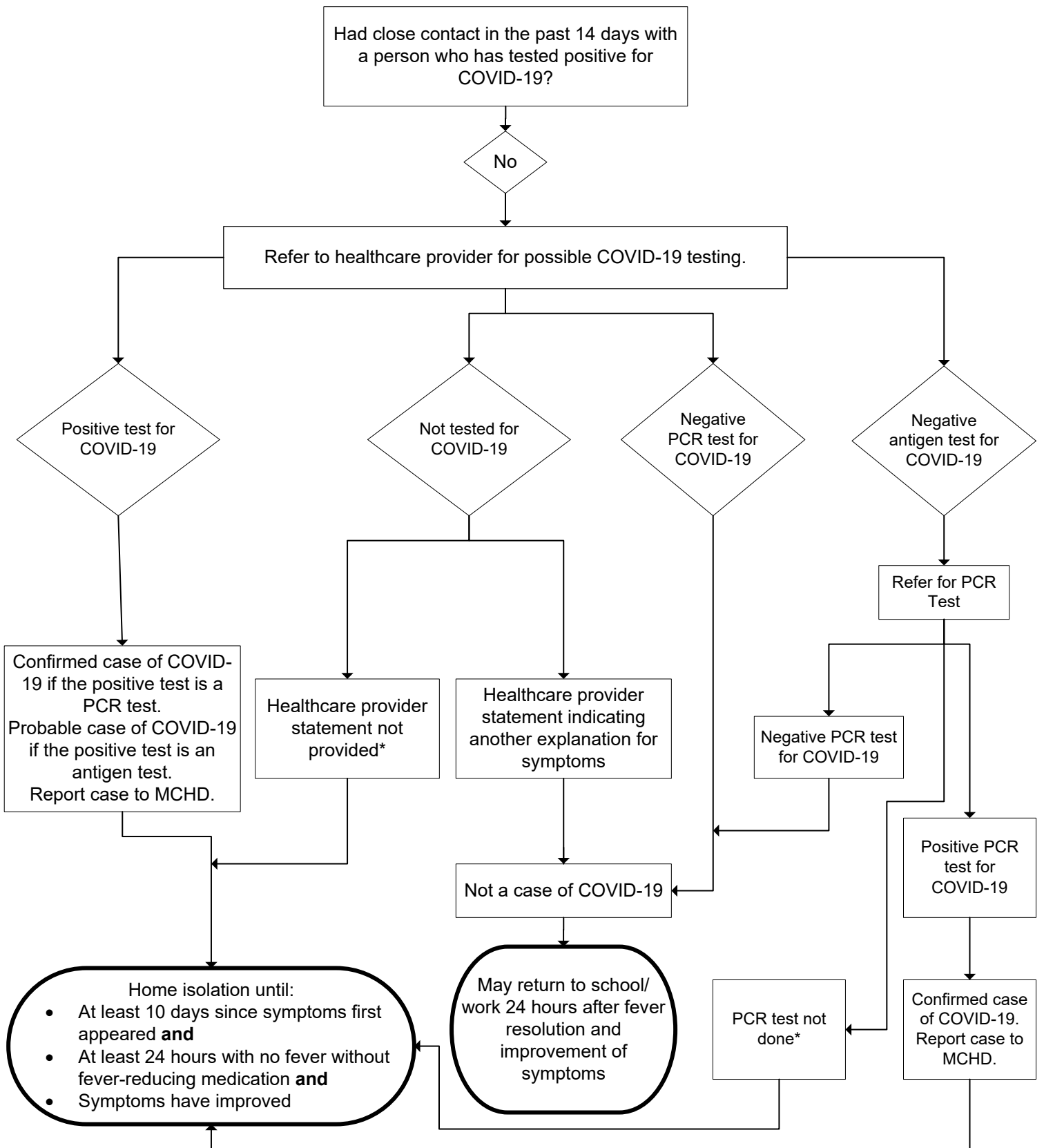


## Macomb County Health Department (MCHD) Students and Staff with Symptoms of COVID-19



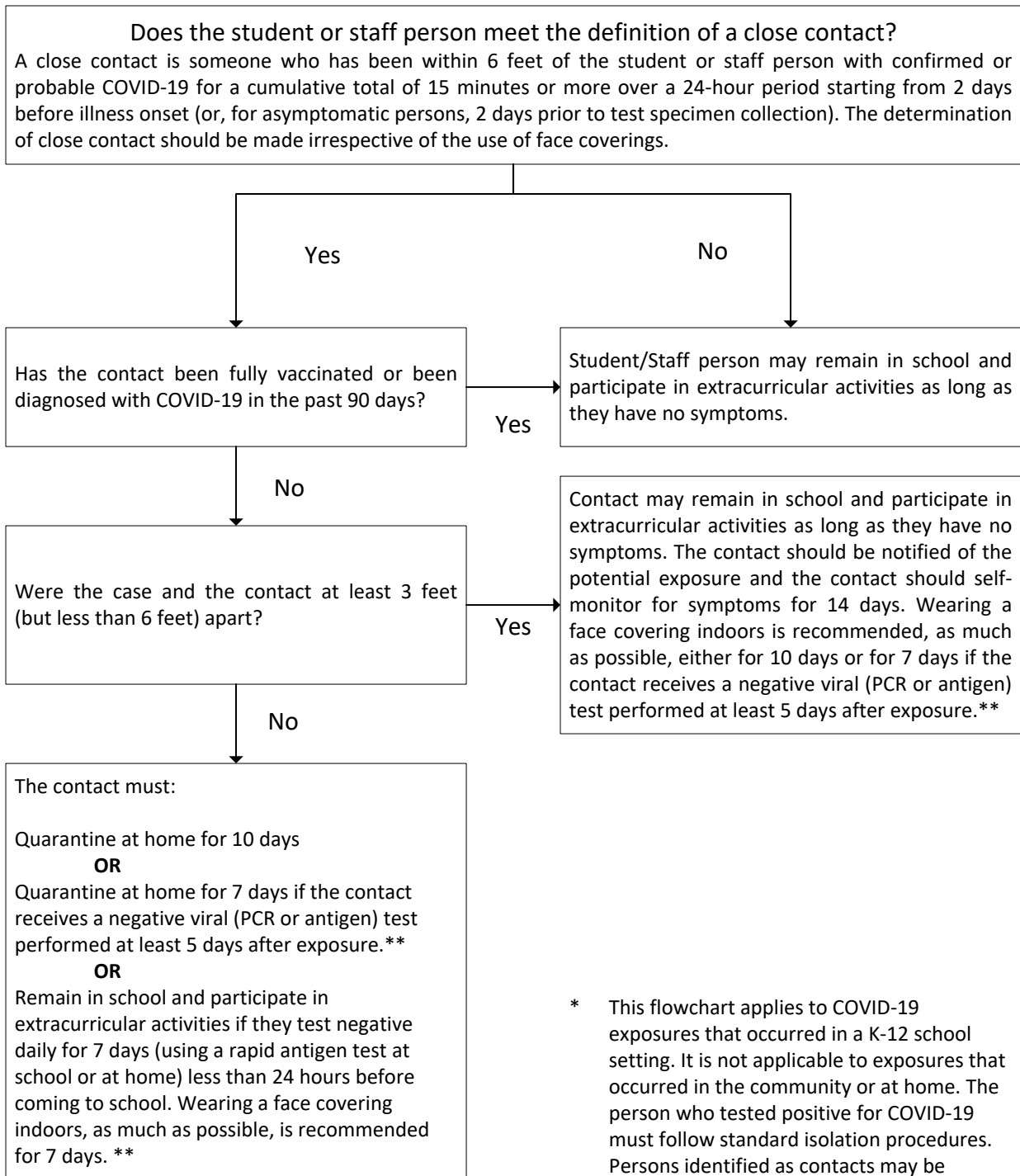
\*Quarantine is not necessary for persons diagnosed with COVID-19 in the past 3 months or for persons fully vaccinated against COVID-19. The quarantine period may be reduced to 7 days if the contact received a negative viral (PCR or antigen) test performed at least 5 days after exposure.

## Macomb County Health Department (MCHD) Students and Staff with Symptoms of COVID-19



\* These persons do not meet the definition of a confirmed or probable case and do not require contact tracing. However, since COVID-19 has not been sufficiently ruled out through testing, a period of isolation is still required.

**Macomb County Health Department  
Quarantine After Exposure to COVID-19  
In K-12 School Settings\***



\* This flowchart applies to COVID-19 exposures that occurred in a K-12 school setting. It is not applicable to exposures that occurred in the community or at home. The person who tested positive for COVID-19 must follow standard isolation procedures. Persons identified as contacts may be notified at the end of the school day.

\*\* Antigen tests may be performed in a clinic setting, at school, or at home using an at-home test kit.