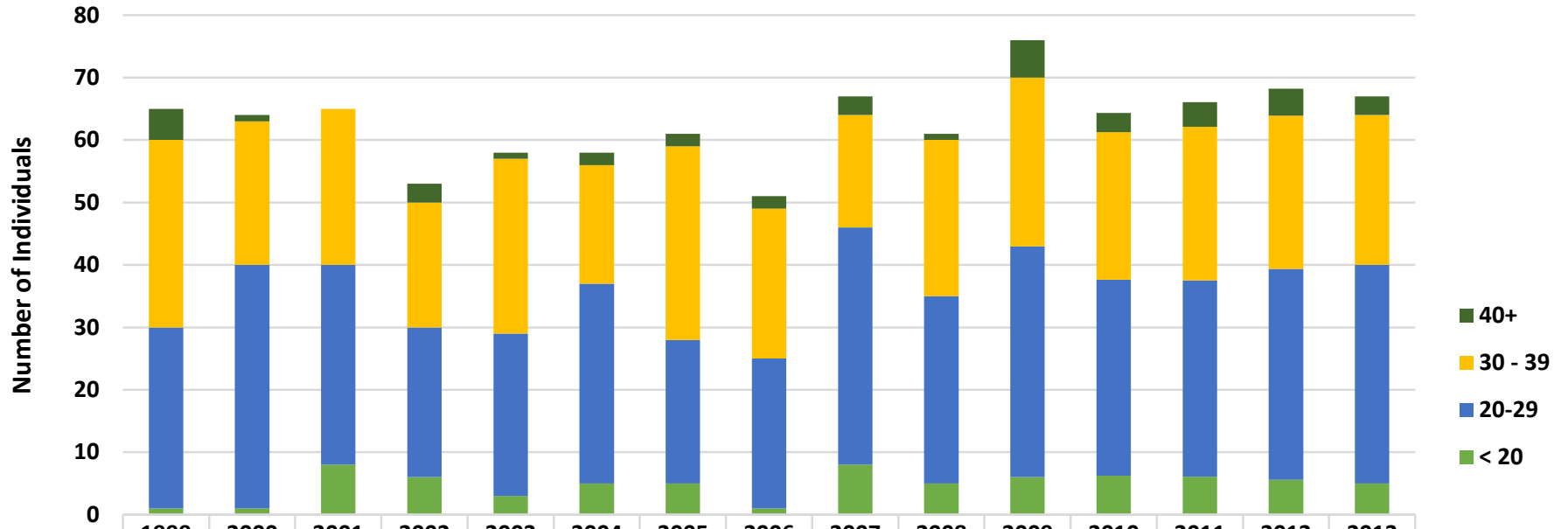


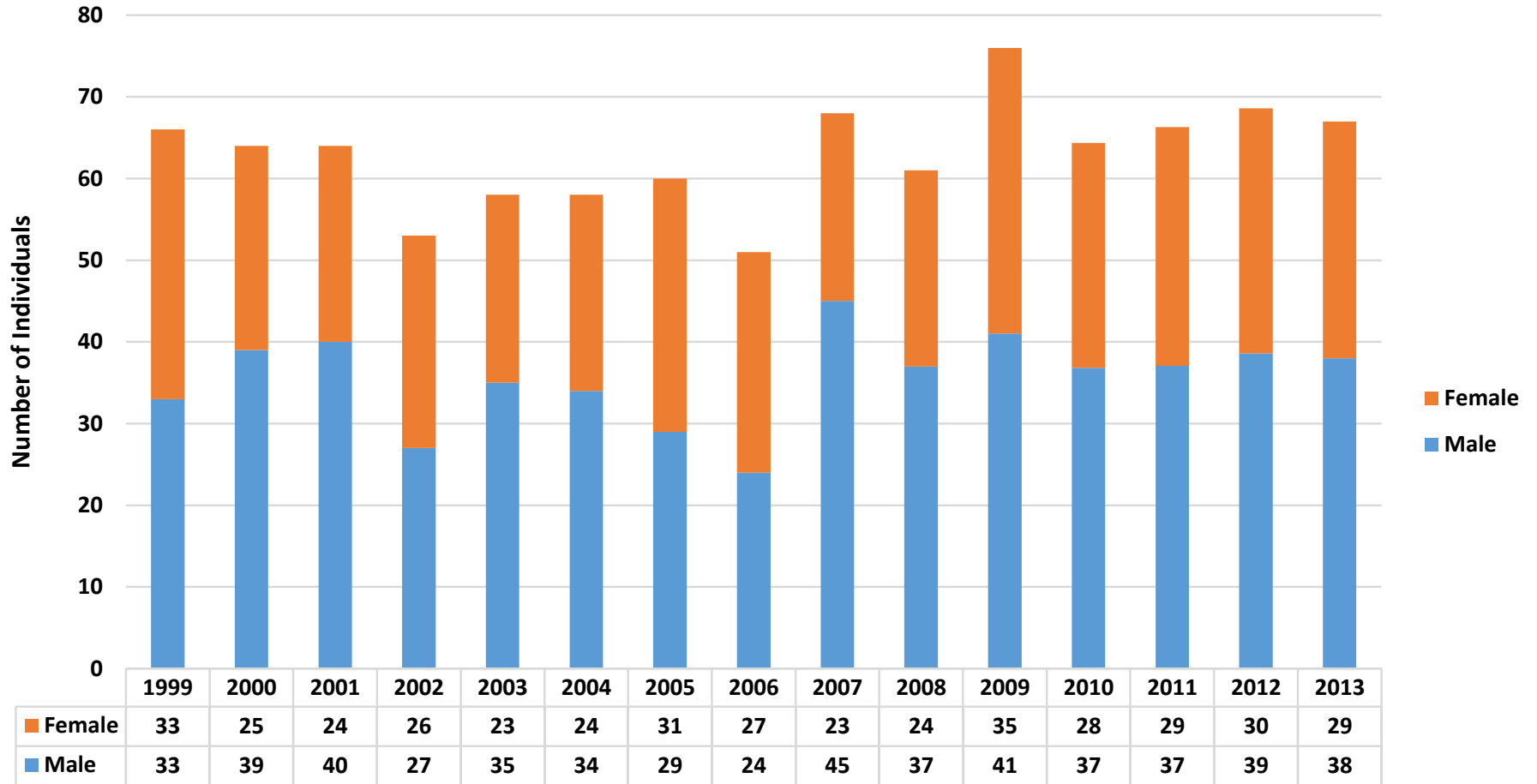
Macomb County Infant Mortality: Age of Mother



	1999	2000	2001	2002	2003	2004	2005	2006	2007	2008	2009	2010	2011	2012	2013
40+	5	1	0	3	1	2	2	2	3	1	6	3	4	4	3
30 - 39	30	23	25	20	28	19	31	24	18	25	27	24	25	25	24
20-29	29	39	32	24	26	32	23	24	38	30	37	31	31	34	35
< 20	1	1	8	6	3	5	5	1	8	5	6	6	6	6	5

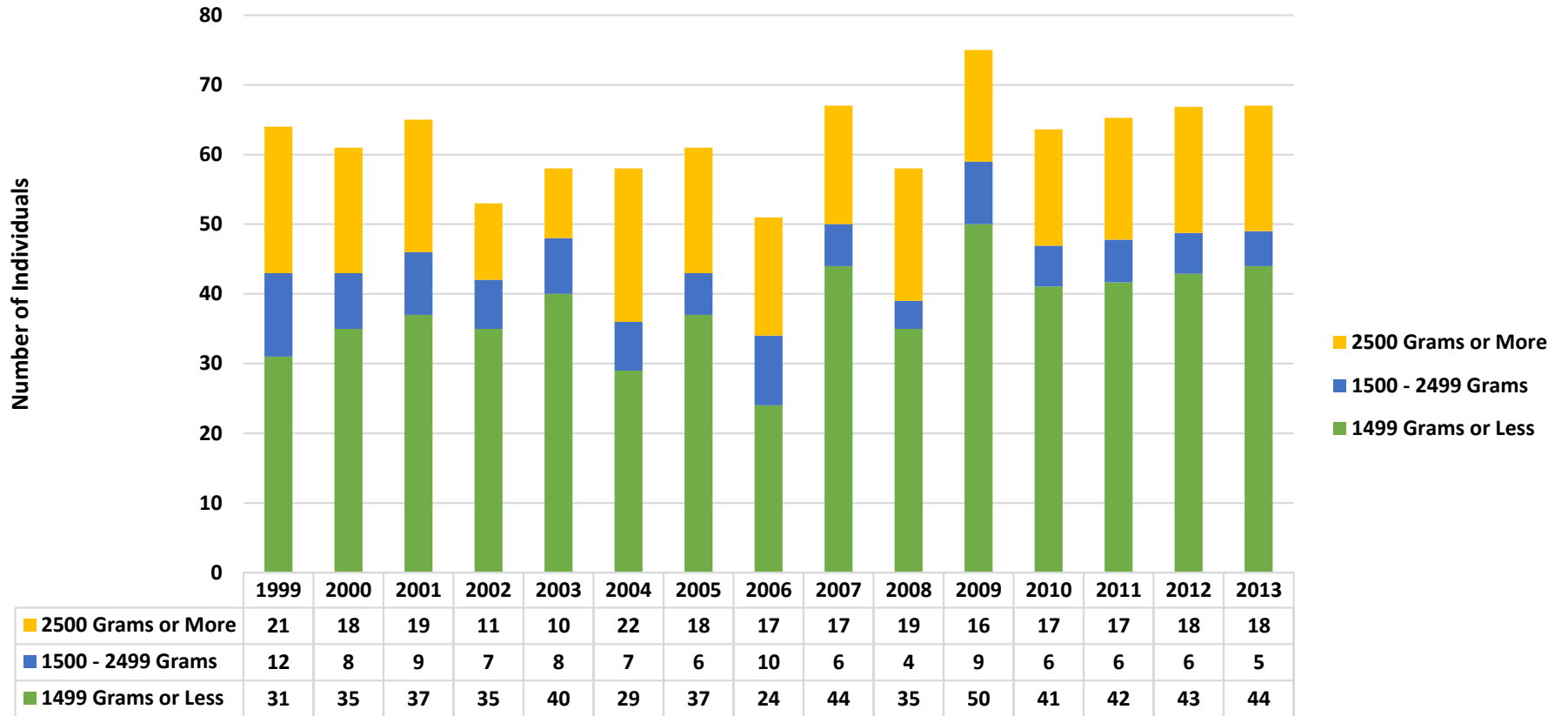
Source: Vital Statistics, Michigan Department of Health and Human Services **Updated:** October 2015

Macomb County Infant Mortality: Number of Infant Deaths



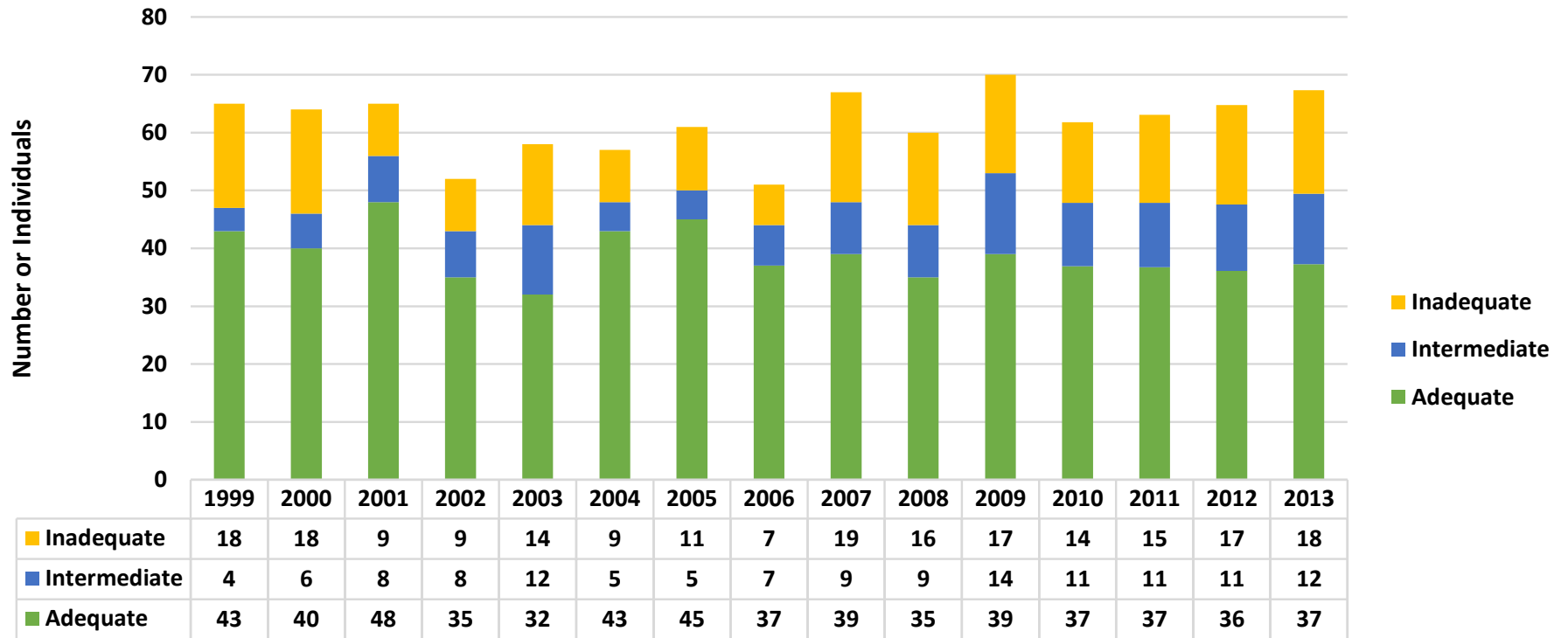
Source: Vital Statistics, Michigan Department of Health and Human Services Updated: October 2015

Macomb County Infant Mortality: Birthweight of Infant Deaths



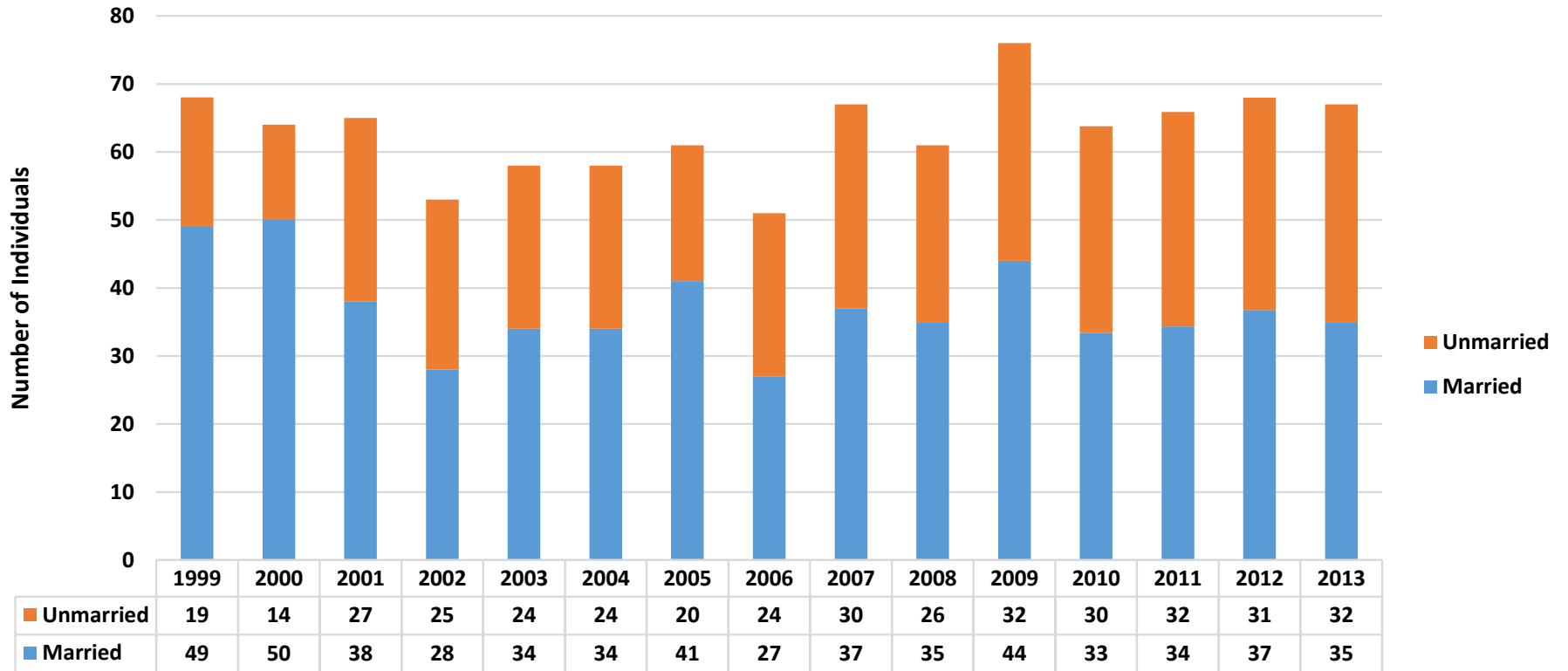
Source: Vital Statistics, Michigan Department of Health and Human Services **Updated:** October 2015

Macomb County Infant Mortality: Level or Prenatal Care



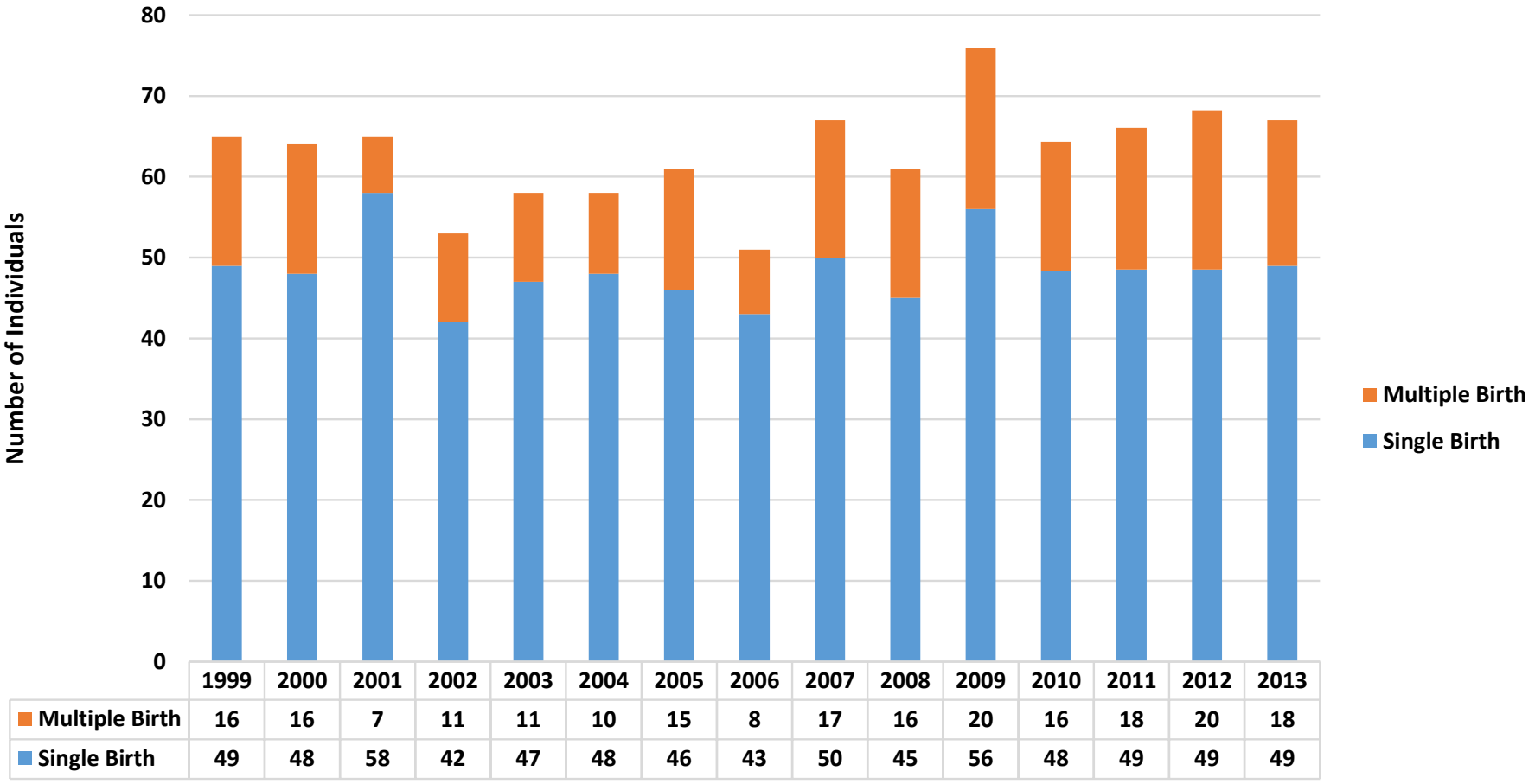
Source: Vital Statistics, Michigan Department of Health and Human Services **Updated:** October 2015

Macomb County Infant Mortality: Marital Status of Mother



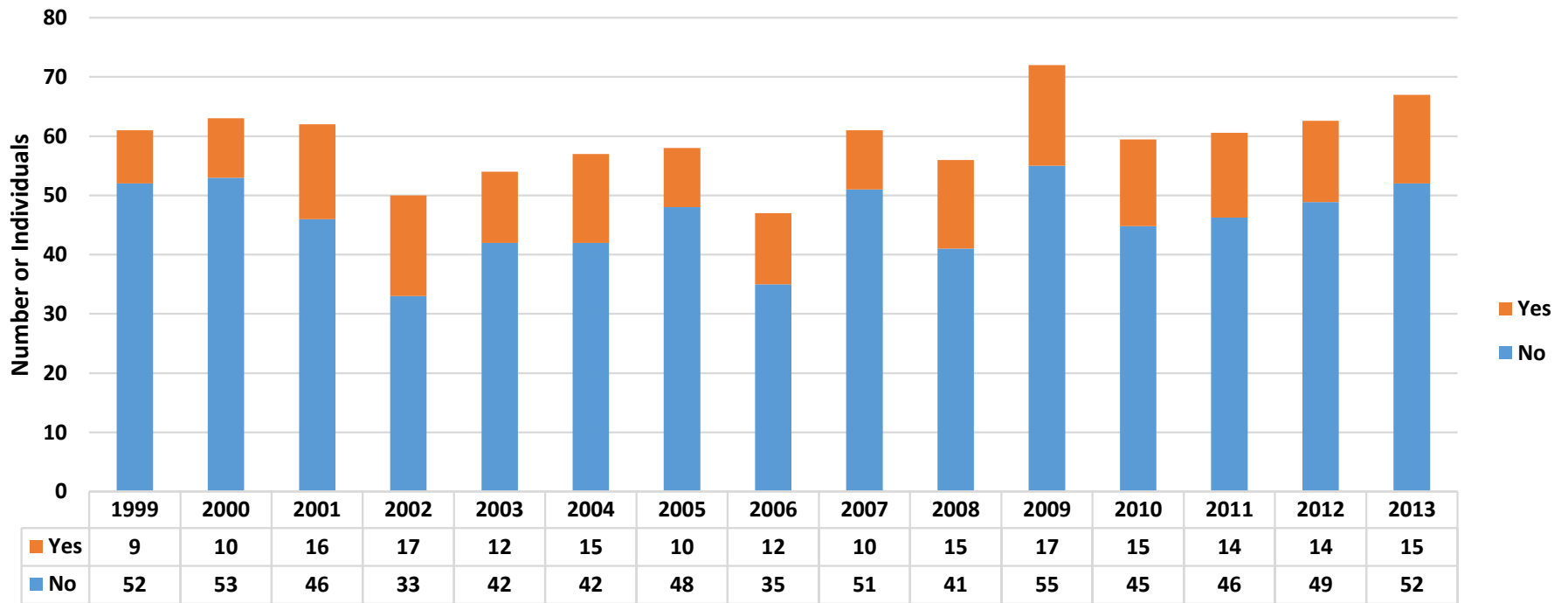
Source: Vital Statistics, Michigan Department of Health and Human Services Updated: October 2015

Macomb County Infant Mortality: Plurality



Source: Vital Statistics, Michigan Department of Health and Human Services Updated: October 2015

Macomb County Infant Mortality: Smoking During Pregnancy



Source: Vital Statistics, Michigan Department of Health and Human Services **Updated:** October 2015