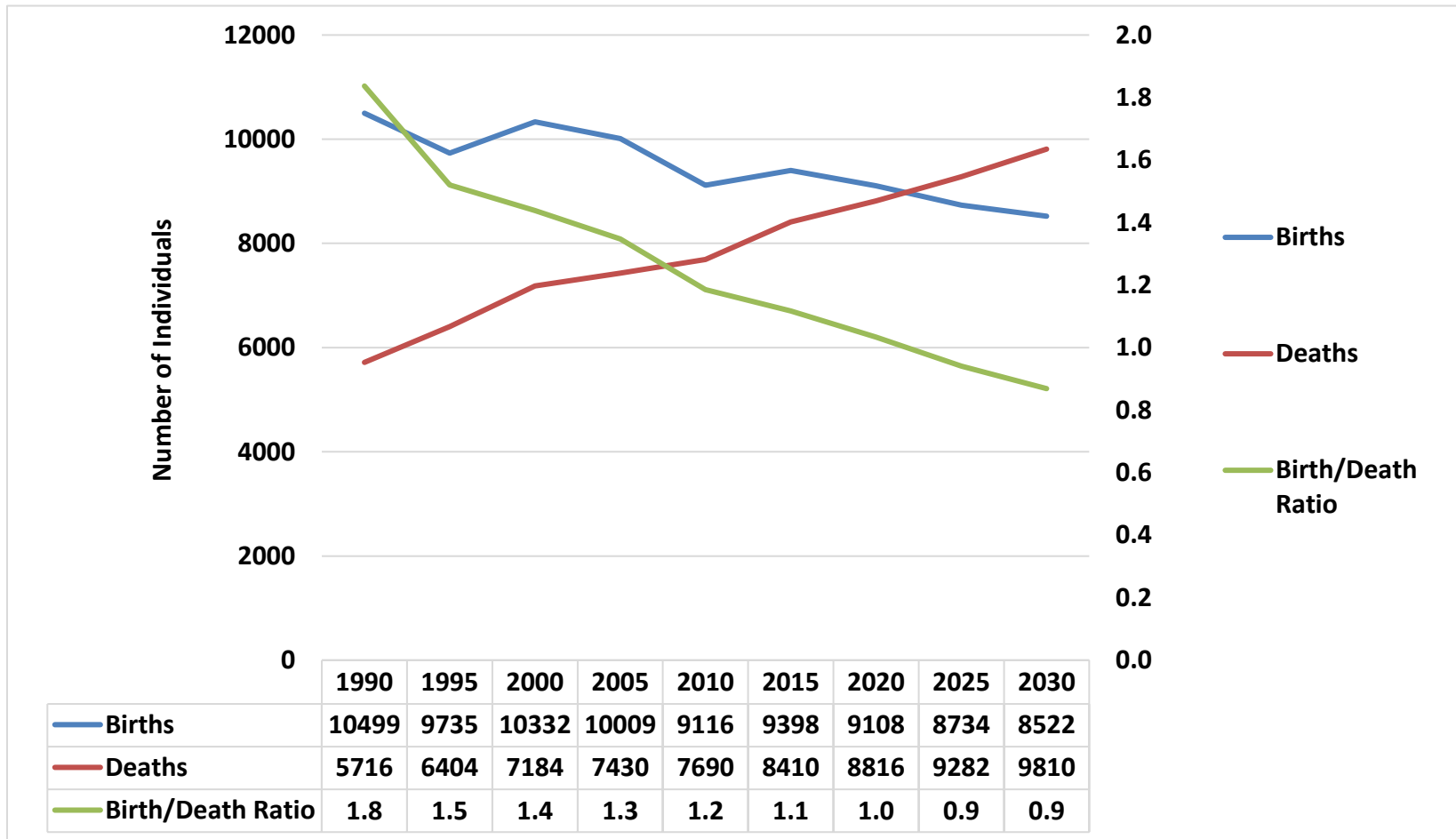


Macomb County: Projected Birth and Death Rates Through 2030

Using birth and death data from 1990 - 2013, linear trends were predicted through 2030. As shown by the scale on the left, the number of births and deaths intersect at approximately 2022. This coincides with the birth/death ratio of 1.0 for the same year, as shown by the scale on the right.



Source: 1990 - 2013 Michigan Resident Files. Division for Vital Records & Health Statistics, Michigan Department of Health and Human Services